

# The Graticule Weekly

UGA Geography's Weekly Newsletter



## ALUMNI SPOTLIGHT

### UGA Geography Alumnus Castle Williamsberg Wins AMS Award



UGA Geography Alumnus Castle Williamsberg was awarded the Outstanding Early Career Award by the American Meteorological Society. Williamsberg graduated with his Ph.D. in Geography in August 2020 and now works as Chief Social Scientist at NOAA's Weather Program Office. Williamsberg posted the following on his LinkedIn profile about the award:

"I am deeply honored to have been named the recipient of the Outstanding Early Career Award by the American Meteorological Society Board on Societal Impacts. This award recognizes individuals who, within 10 years of earning their highest degree or under the age of 40 at the time of nomination, have made significant contributions to the social science discipline and demonstrate exceptional potential to become leaders in the scientific weather community. I'm truly grateful for this recognition, which highlights both past achievements and the promise of continued leadership and impact in advancing the integration of social sciences in weather research and practice. I'm excited to see what this community continues to achieve over the next 10 years!" [Learn more about Dr. Williamsberg here!](#)

## AAG SPRING BOOK LIST NOMINATIONS

The American Association of Geographers is compiling a list of around 50 recent geographic publications to highlight for this spring's official Book List, and the opportunity has been extended for UGA students, faculty and staff to OFFICIALLY nominate their favorite book to be featured! If you or someone you know have read any interesting, though-provoking, exciting, or otherwise cool books in the world of geography recently, please fill out the form below!

[Learn More & Nominate a Book Here!](#)

## UPCOMING DEFENSES



**Tues.**  
**2/11**

**Nemin Wu**  
*Proposal Defense*  
*February 11, 2025*  
*9:00am, GGY 321*



**Thurs.**  
**2/13**

**Farnoosh Roozkhosh**  
*Oral Comp Exam*  
*February 13, 2025*  
*12:00pm, GGY 147*



**Thurs.**  
**2/13**

**Molly Azami**  
*Oral Comp Exam*  
*February 13, 2025*  
*8:00am, GGY 147*



**Thurs.**  
**2/20**

**Esther Lin**  
*Proposal Defense*  
*February 20, 2025*  
*12:30pm, GGY 147*

## General News and Announcements



*The Graticule Weekly is distributed each Friday Afternoon. If you have any news or events you'd like to share throughout the semester, please share them the Geography Department's Communication Coordinator well in advance.*

*Past editions of The Graticule Weekly are available to view on our website!*



*With the Fall semester in full swing, our community remains busy as faculty, staff, students, and visitors navigate our campus. Prioritize your transportation safety and the safety of other's by checking out [the Watch For Dawgs official website.](#)*



*Please download the new UGA Safe app from the Google Play or Apple App stores. Login using your UGA MyID or register as a guest to take advantage of a variety of safety features. For more information, please visit the [UGA Office of Emergency Preparedness website.](#)*

Follow us on social media!



## MARK YOUR CALENDAR



February 7th  
Baldwin Hall  
3:00 - 4:30 pm

UGA Anthropology invites you to a lecture by guest speaker Kristin Phillips. [Learn more about the event and about Dr. Phillips' research here!](#)

UGA ANTHROPOLOGY PRESENTS

**"Making & Breaking Homes in Georgia's Black Belt: Energy, Utility Bills, & the Infrastructures of Belonging."**

By Guest Speaker Dr. Kristin Phillips  
2/7 - Baldwin Hall - 3:00pm



**Dr. Kristin Phillips**



February 13  
GGY 321  
6:00pm

Join UGA Geography's Community Mapping Lab for their first Mapathon of the semester. This is a great opportunity to develop your GIS skills - no prior experience required. Snacks will be provided!



GEORGIA Department of Geography

Community Mapping Lab

**MAPATHON**



February 20  
The Athenaeum  
5:00-7:00pm

Join us for an evening of brief research presentations and a social mixer of faculty interested in collaborating on areas related to "Environment, Migration & History." [Learn more here!](#)



UNIVERSITY OF GEORGIA  
Franklin College of Arts and Sciences

FRANKLIN COLLEGE

**FACULTY RESEARCH MIXER**

**ENVIRONMENT, MIGRATION & HISTORY**



May 9  
Location TBD  
11:00 am

Our 2025 Geography Graduation Ceremony will take place on Friday, May 9th at 11am. More information about location, ticketing, & more coming soon.

**SAVE THE DATE**

**UGA GEOG GRADUATION CEREMONY**

## Prioritize Your Well Being:

### Crafty Coping Club

Crafty Coping Club February 12th  
6:30 - 7:30pm  
UHC Health Center

Crafts, chats and learning new skills -  
Crafts provided or bring your own -  
Crafting also not required, just come chat!

### Change Stress Into Success

Change Stress February 19th  
Into Success 1:00 - 1:50pm  
Online

Join us for this four-part rotating series on managing stress & anxiety. You will learn how to identify and manage your own stress and anxiety as it arises.

### UMatter

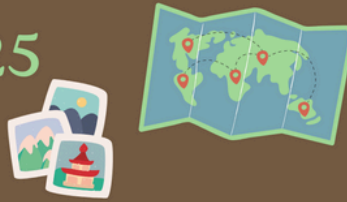
UMatter February 17th  
5:00pm  
MLC 147

Step into our 60-90 minute interactive upstander intervention program, where college students will be given the knowledge and skills to take action when they see someone in need. Change the narrative and become an upstander. All participants will receive a free Fontaine T-Shirt!

# OPPORTUNITIES AND ANNOUNCEMENTS

- [GUSTO'S Spring 2025 Calendar](#)

## GUSTO Spring 2025 Overview



### January

1/21: Coffee Hour  
1/28: Engagement Fair



### February

Week of 2/10: Coffee Hour  
Week of 2/24: Trivia Night with Prizes!



### March

Week of 3/10: Coffee Hour  
Week of 3/24:

Local Hike/  
Geocache



### April

Week of 4/7: Fall '25 Courses Showcase  
Week of 4/21: Coffee Hour

### May

Week of 5/5: Greenroof Potluck



## Social Media

Want to stay up to date with all things UGA Geography? Follow us on our social media accounts. If you have any events, news, awards, or other information you'd like to share on our social media, please reach out to Matt Calonius.



<https://www.facebook.com/GeographyDepartmentUGA/>



<https://www.instagram.com/geographyuga/>



[https://twitter.com/UGA\\_Geography](https://twitter.com/UGA_Geography)

# GET YOUR FLU SHOT ON CAMPUS!

## #FLUGA

NO OUT-OF-POCKET COST FOR STUDENTS!

#BeWellUGA

## SCAN TO FIND DATES & LOCATIONS



University Health Center  
College of Pharmacy  
Well-Being Resources

Bring your UGA ID  
& Insurance Card!



<https://geography.uga.edu>



# OPPORTUNITIES AND ANNOUNCEMENTS

## General News and Announcements



*The Graticule Weekly is distributed each Friday Afternoon. If you have any news or events you'd like to share throughout the semester, please share them the Geography Department's Communication Coordinator well in advance. Past editions of The Graticule Weekly are available to view on our website!*



*With the Fall semester in full swing, our community remains busy as faculty, staff, students, and visitors navigate our campus. Prioritize your transportation safety and the safety of other's by checking out [the Watch For Dawgs official website.](#)*



*Please download the new UGA Safe app from the Google Play or Apple App stores. Login using your UGA MyID or register as a guest to take advantage of a variety of safety features. For more information, please visit the [UGA Office of Emergency Preparedness website.](#)*

Follow us on social media!



**Community MAPPING LAB**  
Dept. of Geography, University of Georgia

# MAP-A-THON

## 1918 Sanborn Map of Athens

### The Project

During the 19th and 20th centuries, the Sanborn Map Company developed detailed U.S. city maps that were used by fire insurance companies to create financial assessments. These maps provide vital historical insight into city landscapes, such as Athens, during those times. The Community Mapping Lab will be using these maps to support research projects focused on mapping historically Black neighborhoods of Athens, such as the Reese Street Neighborhood.

### How you can help

During this mapathon, you'll be asked to georeference the Sanborn Map of Athens from 1918. We will be using an online crowdsourced tool called OldInsuranceMaps.Net. No prior GIS experience required! This will be a great opportunity for students to further develop their GIS skills while also contributing to a community project.

**When: Thurs, February 13th, 2025**

**Time: 6-8pm**

**Where: Geography/ Geology  
Building Room 321**

### Benefits of participating

Snacks will be provided during the event!

Learn more about the project at  
the Community Mapping Lab:

<https://www.communitymappinglab.org>

For any further questions, please

contact Dr. Jerry Shannon at  
[jshannon@uga.edu](mailto:jshannon@uga.edu).

# FRANKLIN FEST

Celebrating Franklin College  
All February!

Free Food | Giveaways  
Events | Fun

**2/3**

Chick-fil-A Biscuits  
President's Club Garden  
10:00 - 11:00 a.m.

**2/19**

Donuts and Coffee Bar  
Courtyard of Hugh  
Hodgson & Lamar Dodd  
10:00 - 11:00 a.m.

**2/11**

Snacks  
Tate Northwest Lawn  
3:00 - 4:00 p.m.

**2/27**

Chick-fil-A  
Sandwiches  
DW Brooks Mall  
12:15 - 1:15 p.m.



# OPPORTUNITIES AND ANNOUNCEMENTS

- [UGA Geography Clinical Faculty Position Now Open](#)

Clinical Faculty in Community Geography and Outreach  
Department of Geography  
University of Georgia

The Department of Geography at the University of Georgia seeks a scholar with expertise in community engagement and experiential learning. This candidate will contribute to our growing community geography program by bringing a demonstrated ability to bridge the gap between scholarly research and locally relevant, community-centered needs. They will participate in the Georgia Community Geography Collective, a departmental initiative to develop mutually beneficial scholarly partnerships in and beyond the local community. The successful candidate will have a broad methodological skillset. Preferred qualifications include all or some of the following: expertise in participatory methods relevant to working with diverse communities; familiarity with geographic thought and scholarship that centers historically marginalized perspectives; the ability to use and provide instruction in geospatial technologies such as participatory GIS; and knowledge of and background working with qualitative research methods. The successful candidate is expected to teach effectively primarily at the undergraduate level and support instructional needs in community geography/service-learning, geospatial methods, and/or human geography. They will also be responsible for growing the department's internship program for undergraduate majors and assist in supervising undergraduate students doing research with community partners. As clinical faculty, this applicant will not have a formal research expectation.

This is an open rank position to be determined by level of experience. Applicants must have a Ph.D. degree in Geography or a related field from an accredited institution. This is a non-tenure-track position which starts on August 1, 2025, and is an academic year appointment (9 months) with opportunities to supplement salary during the summer. It is also subject to annual re-appointment. For UGA policies on rank, experience and promotion of clinical faculty, please see UGA Guidelines for Appointment and Promotion of Clinical Faculty.

Applications received by February 15, 2025, are assured full consideration; however, applications will be accepted until the position is filled. Applicants will be asked to provide names and contact information for three references using the online system. Supporting documents should include a statement addressing the candidate's training and experience relevant to community geography, with specific mention of how the candidate has demonstrated interest and ability to engage with diverse public partners through engaged scholarly work. In addition, applicants should provide a curriculum vitae and a statement of teaching philosophy that highlights their goals and interests.

[Learn More and Apply Here](#)

## Prioritize Your Well Being:

### Crafty Coping Club

Crafty Coping Club      February 12th  
6:30 - 7:30pm  
UHC Health Center

Crafts, chats and learning new skills -  
Crafts provided or bring your own -  
Crafting also not required, just come chat!

### Change Stress Into Success

Change Stress      February 19th  
Into Success      1:00 - 1:50pm  
Online

Join us for this four-part rotating series on managing stress & anxiety. You will learn how to identify and manage your own stress and anxiety as it arises.

### UMatter

UMatter      February 17th  
5:00pm  
MLC 147

*Step into our 60-90 minute interactive upstander intervention program, where college students will be given the knowledge and skills to take action when they see someone in need. Change the narrative and become an upstander. All participants will receive a free Fontaine T-Shirt!*

# OPPORTUNITIES & ANNOUNCEMENTS

## • [UGA Career Center Resources](#)

Check out one or more of UGA's [Career & Internship Fairs](#) this semester.

- [UGA Spring Career & Internship Fair 2025](#) | Wednesday, February 5, 12-5pm, Classic Center
  - If students are interested in summer internship roles or career opportunities, please feel free to promote this fair!
- [Include information about any college-specific career fairs.]
- [UGA Summer Job Fair](#) | Wednesday, March 19th, 11am-2:30pm, Tate Student Center Grand Hall (5th Floor)
  - This fair is a wonderful opportunity for students interested in part-time or seasonal jobs.

Arch Ready: We offer [40+ Arch Ready workshops](#) each semester as part of a professionalism certificate program to develop students' [career readiness competencies](#) and [institutional competencies](#). Students can earn the certificate by participating in 5 eligible events during the semester. Our final program this Spring takes place April 17 and certificates will be distributed the week of April 21!

Classroom Presentations: If you plan on being away this semester, consider allowing me to speak with your students on a relevant topic (resumes, interviewing skills, etc.) for part of or the full class time. Please note that I prefer a minimum of 2 weeks' notice. To request a presentation, please email me at [erinwh@uga.edu](mailto:erinwh@uga.edu) or complete [this survey](#).

- Additionally, you can request up-to-date career content for your eLC course using these [eLC Career Development Modules](#) ([request them here](#)) or prompt your students to explore our [Online Resources](#), such as Forage (virtual work experience programs) or Big Interview (practice mock interviews).

UGA Mentor Program: As a faculty member, there are several ways you can interact with the [UGA Mentor Program](#), the University-wide resource connecting current students (undergraduate, graduate, and professional) with over 5,000 diverse, experienced alumni, faculty, and staff. This program has fostered over 8,000 relationships, each one helping our students grow personally and professionally.

Here are just a few ways faculty members can engage with this program:

- Serve as a [Mentor!](#)
- Encourage/require students to join the program and connect with a mentor
- Invite alumni mentors to speak in your classes or at events/programming
- Request the [UGA Mentor Program eLC modules](#) for your class (students can also [self-enroll!](#))

Refer Students: Feel free to send students our way for any career-related questions.

- Career Coaching Drop-In Hours:
  - In-Person: Mondays-Thursdays, 12pm-2pm in Clark Howell Hall (2nd Floor)
  - Virtual: Fridays, 11am-3pm, [career.uga.edu/appointments](http://career.uga.edu/appointments)
- Individual Appointments: Scheduled through [Handshake](#) or 706-542-3375

Professional Photo Booth: The UGA Career Center offers a free and user-friendly [professional photo booth](#) for all students and alumni. Students can simply drop by the Career Center front desk, Monday-Friday: 8:30am-4:30pm, to use it for their LinkedIn profile, website, portfolio, or conference presentations.

## Social Media

*Want to stay up to date with all things UGA Geography? Follow us on our social media accounts. If you have any events, news, awards, or other information you'd like to share on our social media, please reach out to Matt Colonius.*



<https://www.facebook.com/GeographyDepartmentUGA/>



<https://www.instagram.com/geographyuga/>



<https://twitter.com/UGaGeography>



<https://geography.uga.edu>

# OPPORTUNITIES & ANNOUNCEMENTS

- [TUTOR, UNIVERSITY OF GEORGIA ATHLETIC ASSOCIATION ACADEMIC SUPPORT SERVICES](#)

## DESCRIPTION

Provide individual and small group tutoring to student-athletes in the Rankin Smith Student-Athlete Academic Center. Assist students in improving academic achievement by meeting with them weekly to clarify concepts, enhance study skills, and review class materials.

## COURSES NEEDED

GEOG 1111

\*additional courses in other subjects needed as well\*

## COMPENSATION/HOURS

\*Undergraduate students - \$13/hour

\*Graduate students/professionals - \$15/hour

\*\*Please note that individuals with an assistantship or any other on-campus employment cannot exceed 20 hours per week across all jobs\*\*

## POSITION TYPE

\*Part-time, not eligible for benefits

\*Tutoring will be conducted in-person

\*Hours of Operation:

Sunday – 5-9:30pm

Monday-Thursday – 8am-9:30pm

Friday – 8am-4:30pm

\*evening availability is not required, but always needed

## QUALIFICATIONS

\*Must be in at least second year of undergraduate study or a graduate student/professional

\*Must have earned a B or above in course(s) you are tutoring

\*Must have a minimum GPA of 3.0

## DESIRED CLASS LEVEL(S)

\*3rd Year, 4th Year, Graduate Student, Alumnus

## EXPERIENTIAL LEARNING CREDIT

\*Undergraduate student tutors may be eligible to receive Experiential Learning Credit

## APPLICATION PROCEDURES/ADDITIONAL INFORMATION

\*If you are interested, please reach out to [rankintutoring@uga.edu](mailto:rankintutoring@uga.edu).

## General News and Announcements



*The Graticule Weekly is distributed each Friday Afternoon. If you have any news or events you'd like to share throughout the semester, please share them the Geography Department's Communication Coordinator well in advance.*

*Past editions of The Graticule Weekly are available to view on our website!*



*With the Fall semester in full swing, our community remains busy as faculty, staff, students, and visitors navigate our campus. Prioritize your transportation safety and the safety of other's by checking out the Watch For Dawgs official website.*



*Please download the new UGA Safe app from the Google Play or Apple App stores. Login using your UGA MyID or register as a guest to take advantage of a variety of safety features. For more information, please visit the UGA Office of Emergency Preparedness website.*

Follow us on social media!





FRANKLIN COLLEGE

# FACULTY RESEARCH MIXER

ENVIRONMENT, MIGRATION  
& HISTORY

THURSDAY, FEBRUARY 20, 5:00-7:00  
THE ATHENAEUM, 287 W BROAD ST

Franklin College is looking to bring together faculty across the university who share research affinities to build multidisciplinary research and teaching teams.

Join us for an evening of six brief research presentations and a social mixer of faculty interested in collaborating 287 W Broad St on areas related to "Environment, Migration & History"

FRANKLIN

RSVP At [This Link](#) or





# FEATURED SPEAKERS

**Dr. Mona Behl** is the Associate Director of Georgia Sea Grant and a public service faculty at the University of Georgia. She is also a non-residential policy fellow with the American Meteorological Society. Her work focuses on building community resilience to extreme weather and climate change, and broadening participation in Earth and environmental sciences.

**Dr. Mark Risse**, P.E. is the Director of Marine Extension and Georgia Sea Grant and Georgia Power Professor of Water Resources at the University of Georgia. His expertise is in non-point source pollution management, water resources and Extension/outreach to diverse audiences.

**Professor Brita Lorentzen** is director of the Tree-Rings and Archaeological Wood Analysis Laboratory and Faculty in the Department of Anthropology. She is an environmental archaeologist who uses dendrochronology, stable isotopes, and archaeological plant remains to investigate human interactions with climate and environment and their long-term impacts on forest and coastal ecosystems.

**Professor Marguerite Madden's** research interests include GIScience and Landscape Ecology, including remote sensing, geographic information systems (GIS), spatio-temporal analysis, geovisualization and geographic object-based image analysis, as applied to landscape-scale biological/physical processes and human-impacts on the environment.

**Dr. Cassandra Johnson Gaither** is a Research Social Scientist with the Southern Research Station, USDA Forest Service, in Athens, GA. Her research interests address human perceptions and interactions with nature and the environment. She has published research addressing social group visitation to wild land recreation areas, environmental justice as this relates to minority and lower wealth group access to outdoor recreation facilities, and more recently, the intersection of socially vulnerable populations and environmental risk.

**Professor Michael Marshall** is a Meigs Distinguished Teaching Professor and Associate Director of the School of Art. As the founding director of the Social Ecology Studio, he facilitates collaborative projects with scientific and social research to develop methods for the arts to impact and enhance ecosystems, and to enrich communities.

**Professor Dan Rood** is an Associate Professor of History at the University of Georgia. His scholarship focuses on the intertwined histories of capitalism, slavery, agriculture, and the environment in the 19th century Americas. He is currently finishing a history of plantations in America.





# MAP-A-THON

## 1918 Sanborn Map of Athens

### The Project

During the 19th and 20th centuries, the Sanborn Map Company developed detailed U.S. city maps that were used by fire insurance companies to create financial assessments. These maps provide vital historical insight into city landscapes, such as Athens, during those times. The Community Mapping Lab will be using these maps to support research projects focused on mapping historically Black neighborhoods of Athens, such as the Reese Street Neighborhood.

### How you can help

During this mapathon, you'll be asked to georeference the Sanborn Map of Athens from 1918. We will be using an online crowdsourced tool called OldInsuranceMaps.Net. No prior GIS experience required! This will be a great opportunity for students to further develop their GIS skills while also contributing to a community project.

**When: Thurs, February 13th, 2025**

**Time: 6-8pm**

**Where: Geography/ Geology  
Building Room 321**

### Benefits of participating

Snacks will be provided during the event!

**Learn more about the project at  
the Community Mapping Lab:**  
<https://www.communitymappinglab.org>

For any further questions, please  
contact Dr. Jerry Shannon at  
[jshannon@uga.edu](mailto:jshannon@uga.edu).





Center for Counseling  
& Personal Evaluation  
*Mary Frances Early College of Education*  
**UNIVERSITY OF GEORGIA**



**Thursdays  
starting  
February 13th  
6:00-7:30pm**



**SCAN THE QR CODE TO  
COMPLETE AN INTEREST FORM  
OR CALL 706-542-8508**



# Latinx Student Support Group





**The Fontaine Center**

*University Health Center*

*Student Affairs*

**UNIVERSITY OF GEORGIA**

# GRADUATE STUDENT GROUP WELLNESS COACHING

*Looking to connect with students working on dissertations, theses, academic projects, or research papers? Register for Graduate Student Group Wellness Coaching to stay motivated and improve strategies for time management and work/life balance.*

*Join us for 30-minute sessions to discuss academic goals and writing strategies or stay for an open 1.5 hour writing lab to work on your projects! Snacks provided!*

**FRIDAYS STARTING 1-24**  
**WILLIS WRITING CENTER**  
**PARK HALL 66**  
**11AM-1PM**

*\*Snacks will be provided!*





### GET HELP

Whether it's a life-threatening emergency, a non-emergency concern, or a crime tip; there are several options to relay those concerns.

### MOBILE BLUELIGHT

Immediately call the UGA Police and share your location in real-time with them.

### FRIEND WALK

Send your location in real-time to a friend so they can watch you as you walk to your destination.

### CHAT WITH UGA POLICE

Report a concern by texting with UGA Police.

### HOW TO RESPOND TO AN EMERGENCY

Conveniently located in one place to help you take immediate action.



**DOWNLOAD THE APP!**

[t.uga.edu/7Xf](https://t.uga.edu/7Xf)





# The Graticule Weekly

UGA Geography's Weekly Newsletter



## ALUMNI SPOTLIGHT

### UGA Geography Alumnus Joshua Inwood Appointed AAG Fellow



UGA Geography Alumnus Joshua Inwood has been appointed as a 2025 American Association of Geographers (AAG) Fellow. Dr. Inwood received his Ph.D. from UGA Geography in 2007 and now works as a Professor of Geography at Penn State University. In a recent press release, the AAG shared the following about Dr. Inwood's research and career:

"Dr. Joshua Inwood's career has centered on developing theoretical frameworks to study racism, white supremacy, and the legacies of social justice movements while ensuring this research is accessible and impactful to multiple audiences. His work has positioned him as a leading voice in examining white supremacy within the field of geography, illustrating how geographic concepts and practices both perpetuate racial oppression and serve as tools for resistance.

At the core of Dr. Inwood's scholarship is an exploration of power dynamics in social and political discourse, alongside a commitment to understanding how grassroots resistance movements challenge systems of oppression and demand accountability. Dr. Inwood is widely recognized as one of geography's most effective advocates and communicators. Through public forums, he demonstrates the critical role of geographic storytelling and perspectives in addressing pressing social issues. A prolific writer, he contributes extensively to both scholarly publications and broader public research platforms, bridging the gap between academia and the wider community."

[Learn more about Dr. Inwood here!](#)

## AAG SPRING BOOK LIST NOMINATIONS



The American Association of Geographers is compiling a list of around 50 recent geographic publications to highlight for this spring's official Book List, and the opportunity has been extended for UGA students, faculty and staff to OFFICIALLY nominate their favorite book to be featured!

If you or someone you know have read any interesting, though-provoking, exciting, or otherwise cool books in the world of geography recently, please fill out the form below!

[Learn More & Nominate a Book Here!](#)

## General News and Announcements



*The Graticule Weekly is distributed each Friday Afternoon. If you have any news or events you'd like to share throughout the semester, please share them the Geography Department's Communication Coordinator well in advance.*

*[Past editions of The Graticule Weekly are available to view on our website!](#)*



*With the Fall semester in full swing, our community remains busy as faculty, staff, students, and visitors navigate our campus. Prioritize your transportation safety and the safety of other's by checking out [the Watch For Dawgs official website.](#)*



*Please download the new UGA Safe app from the Google Play or Apple App stores. Login using your UGA MyID or register as a guest to take advantage of a variety of safety features. For more information, please visit the [UGA Office of Emergency Preparedness website.](#)*

Follow us on social media!



## UPCOMING DEFENSES



Molly Azami  
Oral Comp Exam  
February 13, 2025  
8:00am, GGY 147



Esther Lin  
Proposal Defense  
February 20, 2025  
12:30pm, GGY 147



Jielu Zhang  
Dissertation Defense  
April 4, 2025  
12:00pm, GGY 147



Xin Yan  
Comprehensive Exam  
April 18, 2025  
10:00am, GGY 147

## MARK YOUR CALENDAR



February 20  
The Athenaeum  
5:00-7:00pm

Join us for an evening of brief research presentations and a social mixer of faculty interested in collaborating on areas related to "Environment, Migration & History." Learn more here!



February 26  
MLC 248  
3:30 pm

All are invited to join Dean Anna Stenport for conversation and college updates. This event will take place in the Miller Learning Center Room 248.



May 9  
Location TBD  
11:00 am

Our 2025 Geography Graduation Ceremony will take place on Friday, May 9th at 11 am. More information about location, ticketing, & more coming soon.



## Prioritize Your Well Being:

### Crafty Coping Club

Crafty Coping Club February 19th  
6:30 - 7:30pm  
UHC Health Center

Crafts, chats and learning new skills -  
Crafts provided or bring your own -  
Crafting also not required, just come chat!

### Change Stress Into Success

Change Stress February 19th  
Into Success 1:00 - 1:50pm  
Online

Join us for this four-part rotating series on managing stress & anxiety. You will learn how to identify and manage your own stress and anxiety as it arises.

### UMatter

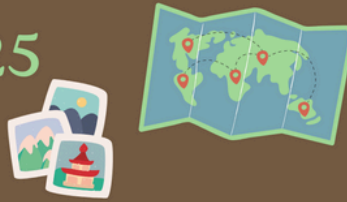
UMatter February 17th  
5:00pm  
MLC 147

Step into our 60-90 minute interactive upstander intervention program, where college students will be given the knowledge and skills to take action when they see someone in need. Change the narrative and become an upstander. All participants will receive a free Fontaine T-Shirt!

# OPPORTUNITIES AND ANNOUNCEMENTS

- [GUSTO'S Spring 2025 Calendar](#)

## GUSTO Spring 2025 Overview



### January

1/21: Coffee Hour  
1/28: Engagement Fair



### February

Week of 2/10: Coffee Hour  
Week of 2/24: Trivia Night with Prizes!



### March

Week of 3/10: Coffee Hour  
Week of 3/24:

Local Hike/  
Geocache



### April

Week of 4/7: Fall '25 Courses Showcase  
Week of 4/21: Coffee Hour

### May

Week of 5/5: Greenroof Potluck



## Social Media

Want to stay up to date with all things UGA Geography? Follow us on our social media accounts. If you have any events, news, awards, or other information you'd like to share on our social media, please reach out to Matt Calonius.



<https://www.facebook.com/GeographyDepartmentUGA/>



<https://www.instagram.com/geographyuga/>



[https://twitter.com/UGA\\_Geography](https://twitter.com/UGA_Geography)

# GET YOUR FLU SHOT ON CAMPUS!

## #FLUGA

NO OUT-OF-POCKET COST FOR STUDENTS!

#BeWellUGA

## SCAN TO FIND DATES & LOCATIONS



University Health Center  
College of Pharmacy  
Well-Being Resources

Bring your UGA ID  
& Insurance Card!



<https://geography.uga.edu>



## OPPORTUNITIES AND ANNOUNCEMENTS

- [Graduate School Dissertation Completion Award](#)

The Dissertation Completion Award (DCA) is designed to support doctoral students who are writing their dissertations and expect to defend and graduate no later than May 2026. The award enables students to concentrate on research and writing to ensure timely degree completion. Recipients will be required to register for 12 graduate credit hours, fall and spring semesters, and should have no teaching responsibilities during the award period.

You may submit your name to be considered for nomination by the Geography department based on the following:

1. Confirm your eligibility in the awards guidelines ([at this link](#)).
2. Send a CV and a short statement (150 words or less) outlining your dissertation progress to date and timeline for completion.
3. A short statement of up to 100 words highlighting your scholarly productivity and achievements.
4. A short statement of up to 100 words outlining your contributions to the university community or the discipline.

Please send the above to both Jenn and Fa by email by Monday, February 17 by 12pm. Late applications will not be considered.

## General News and Announcements



*The Graticule Weekly is distributed each Friday Afternoon. If you have any news or events you'd like to share throughout the semester, please share them the Geography Department's Communication Coordinator well in advance.*

*[Past editions of The Graticule Weekly are available to view on our website!](#)*



*With the Fall semester in full swing, our community remains busy as faculty, staff, students, and visitors navigate our campus. Prioritize your transportation safety and the safety of other's by checking out [the Watch For Dawgs official website](#).*



*Please download the new UGA Safe app from the Google Play or Apple App stores. Login using your UGA MyID or register as a guest to take advantage of a variety of safety features. For more information, please visit the [UGA Office of Emergency Preparedness website](#).*

Follow us on social media!



Franklin College of Arts and Sciences  
UNIVERSITY OF GEORGIA

# FRANKLIN FEST

Celebrating Franklin College All February!

Free Food | Giveaways  
Events | Fun

<b>2/3</b>	Chick-fil-A Biscuits President's Club Garden 10:00 - 11:00 a.m.	<b>2/19</b>	Donuts and Coffee Bar Courtyard of Hugh Hodgson & Lamar Dodd 10:00 - 11:00 a.m.
<b>2/11</b>	Snacks Tate Northwest Lawn 3:00 - 4:00 p.m.	<b>2/27</b>	Chick-fil-A Sandwiches DW Brooks Mall 12:15 - 1:15 p.m.

# OPPORTUNITIES AND ANNOUNCEMENTS

- [UGA Geography Clinical Faculty Position Now Open](#)

Clinical Faculty in Community Geography and Outreach  
Department of Geography  
University of Georgia

The Department of Geography at the University of Georgia seeks a scholar with expertise in community engagement and experiential learning. This candidate will contribute to our growing community geography program by bringing a demonstrated ability to bridge the gap between scholarly research and locally relevant, community-centered needs. They will participate in the Georgia Community Geography Collective, a departmental initiative to develop mutually beneficial scholarly partnerships in and beyond the local community. The successful candidate will have a broad methodological skillset. Preferred qualifications include all or some of the following: expertise in participatory methods relevant to working with diverse communities; familiarity with geographic thought and scholarship that centers historically marginalized perspectives; the ability to use and provide instruction in geospatial technologies such as participatory GIS; and knowledge of and background working with qualitative research methods. The successful candidate is expected to teach effectively primarily at the undergraduate level and support instructional needs in community geography/service-learning, geospatial methods, and/or human geography. They will also be responsible for growing the department's internship program for undergraduate majors and assist in supervising undergraduate students doing research with community partners. As clinical faculty, this applicant will not have a formal research expectation.

This is an open rank position to be determined by level of experience. Applicants must have a Ph.D. degree in Geography or a related field from an accredited institution. This is a non-tenure-track position which starts on August 1, 2025, and is an academic year appointment (9 months) with opportunities to supplement salary during the summer. It is also subject to annual re-appointment. For UGA policies on rank, experience and promotion of clinical faculty, please see UGA Guidelines for Appointment and Promotion of Clinical Faculty.

Applications received by February 15, 2025, are assured full consideration; however, applications will be accepted until the position is filled. Applicants will be asked to provide names and contact information for three references using the online system. Supporting documents should include a statement addressing the candidate's training and experience relevant to community geography, with specific mention of how the candidate has demonstrated interest and ability to engage with diverse public partners through engaged scholarly work. In addition, applicants should provide a curriculum vitae and a statement of teaching philosophy that highlights their goals and interests.

[Learn More and Apply Here](#)

## Prioritize Your Well Being:

### Crafty Coping Club

Crafty Coping Club      February 12th  
6:30 - 7:30pm  
UHC Health Center

Crafts, chats and learning new skills -  
Crafts provided or bring your own -  
Crafting also not required, just come chat!

### Change Stress Into Success

Change Stress      February 19th  
Into Success      1:00 - 1:50pm  
Online

Join us for this four-part rotating series on managing stress & anxiety. You will learn how to identify and manage your own stress and anxiety as it arises.

### UMatter

UMatter      February 17th  
5:00pm  
MLC 147

*Step into our 60-90 minute interactive upstander intervention program, where college students will be given the knowledge and skills to take action when they see someone in need. Change the narrative and become an upstander. All participants will receive a free Fontaine T-Shirt!*

# OPPORTUNITIES AND ANNOUNCEMENTS

- [UGA Geography Clinical Faculty Position Now Open](#)

Clinical Faculty in Community Geography and Outreach  
Department of Geography  
University of Georgia

The Department of Geography at the University of Georgia seeks a scholar with expertise in community engagement and experiential learning. This candidate will contribute to our growing community geography program by bringing a demonstrated ability to bridge the gap between scholarly research and locally relevant, community-centered needs. They will participate in the Georgia Community Geography Collective, a departmental initiative to develop mutually beneficial scholarly partnerships in and beyond the local community. The successful candidate will have a broad methodological skillset. Preferred qualifications include all or some of the following: expertise in participatory methods relevant to working with diverse communities; familiarity with geographic thought and scholarship that centers historically marginalized perspectives; the ability to use and provide instruction in geospatial technologies such as participatory GIS; and knowledge of and background working with qualitative research methods. The successful candidate is expected to teach effectively primarily at the undergraduate level and support instructional needs in community geography/service-learning, geospatial methods, and/or human geography. They will also be responsible for growing the department's internship program for undergraduate majors and assist in supervising undergraduate students doing research with community partners. As clinical faculty, this applicant will not have a formal research expectation.

This is an open rank position to be determined by level of experience. Applicants must have a Ph.D. degree in Geography or a related field from an accredited institution. This is a non-tenure-track position which starts on August 1, 2025, and is an academic year appointment (9 months) with opportunities to supplement salary during the summer. It is also subject to annual re-appointment. For UGA policies on rank, experience and promotion of clinical faculty, please see UGA Guidelines for Appointment and Promotion of Clinical Faculty.

Applications received by February 15, 2025, are assured full consideration; however, applications will be accepted until the position is filled. Applicants will be asked to provide names and contact information for three references using the online system. Supporting documents should include a statement addressing the candidate's training and experience relevant to community geography, with specific mention of how the candidate has demonstrated interest and ability to engage with diverse public partners through engaged scholarly work. In addition, applicants should provide a curriculum vitae and a statement of teaching philosophy that highlights their goals and interests.

[Learn More and Apply Here](#)

## Prioritize Your Well Being:

### Crafty Coping Club

Crafty Coping Club      February 19th  
6:30 - 7:30pm  
UHC Health Center

Crafts, chats and learning new skills -  
Crafts provided or bring your own -  
Crafting also not required, just come chat!

### Change Stress Into Success

Change Stress      February 19th  
Into Success      1:00 - 1:50pm  
Online

Join us for this four-part rotating series on managing stress & anxiety. You will learn how to identify and manage your own stress and anxiety as it arises.

### UMatter

UMatter      February 17th  
5:00pm  
MLC 147

*Step into our 60-90 minute interactive upstander intervention program, where college students will be given the knowledge and skills to take action when they see someone in need. Change the narrative and become an upstander. All participants will receive a free Fontaine T-Shirt!*



# OPPORTUNITIES & ANNOUNCEMENTS

- [UGA Career Center Resources](#)

Check out one or more of UGA's [Career & Internship Fairs](#) this semester.

- [UGA Spring Career & Internship Fair 2025](#) | Wednesday, February 5, 12-5pm, Classic Center
  - If students are interested in summer internship roles or career opportunities, please feel free to promote this fair!
- [Include information about any college-specific career fairs.]
- [UGA Summer Job Fair](#) | Wednesday, March 19th, 11am-2:30pm, Tate Student Center Grand Hall (5th Floor)
  - This fair is a wonderful opportunity for students interested in part-time or seasonal jobs.

Arch Ready: We offer [40+ Arch Ready workshops](#) each semester as part of a professionalism certificate program to develop students' [career readiness competencies](#) and [institutional competencies](#). Students can earn the certificate by participating in 5 eligible events during the semester. Our final program this Spring takes place April 17 and certificates will be distributed the week of April 21!

Classroom Presentations: If you plan on being away this semester, consider allowing me to speak with your students on a relevant topic (resumes, interviewing skills, etc.) for part of or the full class time. Please note that I prefer a minimum of 2 weeks' notice. To request a presentation, please email me at [erinwh@uga.edu](mailto:erinwh@uga.edu) or complete [this survey](#).

- Additionally, you can request up-to-date career content for your eLC course using these [eLC Career Development Modules](#) ([request them here](#)) or prompt your students to explore our [Online Resources](#), such as Forage (virtual work experience programs) or Big Interview (practice mock interviews).

UGA Mentor Program: As a faculty member, there are several ways you can interact with the [UGA Mentor Program](#), the University-wide resource connecting current students (undergraduate, graduate, and professional) with over 5,000 diverse, experienced alumni, faculty, and staff. This program has fostered over 8,000 relationships, each one helping our students grow personally and professionally.

Here are just a few ways faculty members can engage with this program:

- Serve as a [Mentor!](#)
- Encourage/require students to join the program and connect with a mentor
- Invite alumni mentors to speak in your classes or at events/programming
- Request the [UGA Mentor Program eLC modules](#) for your class (students can also [self-enroll!](#))

Refer Students: Feel free to send students our way for any career-related questions.

- Career Coaching Drop-In Hours:
  - In-Person: Mondays-Thursdays, 12pm-2pm in Clark Howell Hall (2nd Floor)
  - Virtual: Fridays, 11am-3pm, [career.uga.edu/appointments](http://career.uga.edu/appointments)
- Individual Appointments: Scheduled through [Handshake](#) or 706-542-3375

Professional Photo Booth: The UGA Career Center offers a free and user-friendly [professional photo booth](#) for all students and alumni. Students can simply drop by the Career Center front desk, Monday-Friday: 8:30am-4:30pm, to use it for their LinkedIn profile, website, portfolio, or conference presentations.

## Social Media

*Want to stay up to date with all things UGA Geography? Follow us on our social media accounts. If you have any events, news, awards, or other information you'd like to share on our social media, please reach out to Matt Colonius.*



<https://www.facebook.com/GeographyDepartmentUGA/>



<https://www.instagram.com/geographyuga/>



<https://twitter.com/UgaGeography>



<https://geography.uga.edu>

# OPPORTUNITIES & ANNOUNCEMENTS

- [TUTOR, UNIVERSITY OF GEORGIA ATHLETIC ASSOCIATION ACADEMIC SUPPORT SERVICES](#)

## DESCRIPTION

Provide individual and small group tutoring to student-athletes in the Rankin Smith Student-Athlete Academic Center. Assist students in improving academic achievement by meeting with them weekly to clarify concepts, enhance study skills, and review class materials.

## COURSES NEEDED

GEOG 1111

\*additional courses in other subjects needed as well\*

## COMPENSATION/HOURS

\*Undergraduate students - \$13/hour

\*Graduate students/professionals - \$15/hour

\*\*Please note that individuals with an assistantship or any other on-campus employment cannot exceed 20 hours per week across all jobs\*\*

## POSITION TYPE

\*Part-time, not eligible for benefits

\*Tutoring will be conducted in-person

\*Hours of Operation:

Sunday – 5-9:30pm

Monday-Thursday – 8am-9:30pm

Friday – 8am-4:30pm

\*evening availability is not required, but always needed

## QUALIFICATIONS

\*Must be in at least second year of undergraduate study or a graduate student/professional

\*Must have earned a B or above in course(s) you are tutoring

\*Must have a minimum GPA of 3.0

## DESIRED CLASS LEVEL(S)

\*3rd Year, 4th Year, Graduate Student, Alumnus

## EXPERIENTIAL LEARNING CREDIT

\*Undergraduate student tutors may be eligible to receive Experiential Learning Credit

## APPLICATION PROCEDURES/ADDITIONAL INFORMATION

\*If you are interested, please reach out to [rankintutoring@uga.edu](mailto:rankintutoring@uga.edu).

## General News and Announcements



*The Graticule Weekly is distributed each Friday Afternoon. If you have any news or events you'd like to share throughout the semester, please share them the Geography Department's Communication Coordinator well in advance. Past editions of The Graticule Weekly are available to view on our website!*



*With the Fall semester in full swing, our community remains busy as faculty, staff, students, and visitors navigate our campus. Prioritize your transportation safety and the safety of other's by checking out [the Watch For Dawgs official website.](#)*



*Please download the new UGA Safe app from the Google Play or Apple App stores. Login using your UGA MyID or register as a guest to take advantage of a variety of safety features. For more information, please visit the [UGA Office of Emergency Preparedness website.](#)*

Follow us on social media!





FRANKLIN COLLEGE

# FACULTY RESEARCH MIXER

ENVIRONMENT, MIGRATION  
& HISTORY

THURSDAY, FEBRUARY 20, 5:00-7:00  
THE ATHENAEUM, 287 W BROAD ST

Franklin College is looking to bring together faculty across the university who share research affinities to build multidisciplinary research and teaching teams.

Join us for an evening of six brief research presentations and a social mixer of faculty interested in collaborating 287 W Broad St on areas related to "Environment, Migration & History"

FRANKLIN

RSVP At [This Link](#) or





# FEATURED SPEAKERS

**Dr. Mona Behl** is the Associate Director of Georgia Sea Grant and a public service faculty at the University of Georgia. She is also a non-residential policy fellow with the American Meteorological Society. Her work focuses on building community resilience to extreme weather and climate change, and broadening participation in Earth and environmental sciences.

**Dr. Mark Risse**, P.E. is the Director of Marine Extension and Georgia Sea Grant and Georgia Power Professor of Water Resources at the University of Georgia. His expertise is in non-point source pollution management, water resources and Extension/outreach to diverse audiences.

**Professor Brita Lorentzen** is director of the Tree-Rings and Archaeological Wood Analysis Laboratory and Faculty in the Department of Anthropology. She is an environmental archaeologist who uses dendrochronology, stable isotopes, and archaeological plant remains to investigate human interactions with climate and environment and their long-term impacts on forest and coastal ecosystems.

**Professor Marguerite Madden's** research interests include GIScience and Landscape Ecology, including remote sensing, geographic information systems (GIS), spatio-temporal analysis, geovisualization and geographic object-based image analysis, as applied to landscape-scale biological/physical processes and human-impacts on the environment.

**Dr. Cassandra Johnson Gaither** is a Research Social Scientist with the Southern Research Station, USDA Forest Service, in Athens, GA. Her research interests address human perceptions and interactions with nature and the environment. She has published research addressing social group visitation to wild land recreation areas, environmental justice as this relates to minority and lower wealth group access to outdoor recreation facilities, and more recently, the intersection of socially vulnerable populations and environmental risk.

**Professor Michael Marshall** is a Meigs Distinguished Teaching Professor and Associate Director of the School of Art. As the founding director of the Social Ecology Studio, he facilitates collaborative projects with scientific and social research to develop methods for the arts to impact and enhance ecosystems, and to enrich communities.

**Professor Dan Rood** is an Associate Professor of History at the University of Georgia. His scholarship focuses on the intertwined histories of capitalism, slavery, agriculture, and the environment in the 19th century Americas. He is currently finishing a history of plantations in America.







Center for Counseling  
& Personal Evaluation  
*Mary Frances Early College of Education*  
**UNIVERSITY OF GEORGIA**



**Thursdays  
starting  
February 13th  
6:00-7:30pm**



**SCAN THE QR CODE TO  
COMPLETE AN INTEREST FORM  
OR CALL 706-542-8508**



# Latinx Student Support Group





**The Fontaine Center**

*University Health Center*

*Student Affairs*

**UNIVERSITY OF GEORGIA**

# GRADUATE STUDENT GROUP WELLNESS COACHING

*Looking to connect with students working on dissertations, theses, academic projects, or research papers? Register for Graduate Student Group Wellness Coaching to stay motivated and improve strategies for time management and work/life balance.*

*Join us for 30-minute sessions to discuss academic goals and writing strategies or stay for an open 1.5 hour writing lab to work on your projects! Snacks provided!*

**FRIDAYS STARTING 1-24**  
**WILLIS WRITING CENTER**  
**PARK HALL 66**  
**11AM-1PM**

*\*Snacks will be provided!*





### GET HELP

Whether it's a life-threatening emergency, a non-emergency concern, or a crime tip; there are several options to relay those concerns.

### MOBILE BLUELIGHT

Immediately call the UGA Police and share your location in real-time with them.

### FRIEND WALK

Send your location in real-time to a friend so they can watch you as you walk to your destination.

### CHAT WITH UGA POLICE

Report a concern by texting with UGA Police.

### HOW TO RESPOND TO AN EMERGENCY

Conveniently located in one place to help you take immediate action.



**DOWNLOAD THE APP!**

[t.uga.edu/7Xf](https://t.uga.edu/7Xf)





# The Graticule Weekly

UGA Geography's Weekly Newsletter



## FACULTY SPOTLIGHT

### Xiaobai Angela Yao Named Editor-in-Chief of CaGIS Journal



UGA Geography professor Xiaobai Angela Yao has been named the Editor-in-Chief of The Cartography and Information Society's journal, Cartography and Information Science (CaGIS). According to the CaGIS website, "The Cartography and Geographic Information Society supports research, education, and practices that improve the understanding, creation, analysis, and use of maps and geographic information."

The society serves as a forum for the exchange of original concepts, techniques, approaches, and experiences by those who design, implement, and use geospatial technologies through the publication of authoritative articles and international papers. The role of the CaGIS journal is to facilitate these objectives by disseminating results and reports in these areas of interest."

In a recent press release, CaGIS shared the following on Dr. Yao's selection: "The Cartography and Geographic Information Society is pleased to announce the selection of Dr. Xiaobai Angela Yao as Editor-in-Chief for its journal, Cartography and Geographic Information Science. Dr. Yao is a professor in the Department of Geography at the University of Georgia and has been actively serving as an Associate Editor with Dr. Eric Delmelle, the current Editor-in-Chief of the CaGIS journal. She also recently served (2020-2024) in the CaGIS Officer rotation and was co-Program Chair of the AutoCarto 2022 conference. Dr. Yao will assume the duties of the Editor-in-Chief position on October 1, 2025."

[Learn more about Dr. Yao here!](#)

## AAG SPRING BOOK LIST NOMINATIONS



The American Association of Geographers is compiling a list of around 50 recent geographic publications to highlight for this spring's official Book List, and the opportunity has been extended for UGA students, faculty and staff to OFFICIALLY nominate their favorite book to be featured!

If you or someone you know have read any interesting, though-provoking, exciting, or otherwise cool books in the world of geography recently, please fill out the form below!

[Learn More & Nominate a Book Here!](#)

## General News and Announcements



*The Graticule Weekly is distributed each Friday Afternoon. If you have any news or events you'd like to share throughout the semester, please share them the Geography Department's Communication Coordinator well in advance.*

*Past editions of The Graticule Weekly are available to view on our website!*



*With the Fall semester in full swing, our community remains busy as faculty, staff, students, and visitors navigate our campus. Prioritize your transportation safety and the safety of other's by checking out the Watch For Dawgs official website.*



*Please download the new UGA Safe app from the Google Play or Apple App stores. Login using your UGA MyID or register as a guest to take advantage of a variety of safety features. For more information, please visit the UGA Office of Emergency Preparedness website.*

Follow us on social media!



## UPCOMING DEFENSES



Molly Azami  
Oral Comp Exam  
February 20, 2025  
8:00am, GGY 147



Esther Lin  
Proposal Defense  
February 20, 2025  
12:30pm, GGY 147



Jielu Zhang  
Dissertation Defense  
April 4, 2025  
12:00pm, GGY 147



Xin Yan  
Comprehensive Exam  
April 18, 2025  
10:00am, GGY 147

## MARK YOUR CALENDAR



February 26  
MLC 248  
3:30 pm

All are invited to join Dean Anna Stenport for conversation and college updates. This event will take place in the Miller Learning Center Room 248.



April 23  
Geography Bldg.  
Room 200D

Our 2025 Geography Undergraduate Awards Reception will take place on Wednesday, April 23rd. Award nominations are open now! See the next page for info on nominating.



May 9  
Location TBD  
11:00 am

Our 2025 Geography Graduation Ceremony will take place on Friday, May 9th at 11 am. More information about location, ticketing, & more coming soon.



## Prioritize Your Well Being:

### Crafty Coping Club

Crafty Coping Club February 26th  
6:30 - 7:30pm  
UHC Health Center

Crafts, chats and learning new skills -  
Crafts provided or bring your own -  
Crafting also not required, just come chat!

### Change Stress Into Success

Change Stress February 26th  
Into Success 1:00 - 1:50pm  
Online

Join us for this four-part rotating series on managing stress & anxiety. You will learn how to identify and manage your own stress and anxiety as it arises.

### UMatter

UMatter March 13th  
5:00pm  
MLC 147

Step into our 60-90 minute interactive upstander intervention program, where college students will be given the knowledge and skills to take action when they see someone in need. Change the narrative and become an upstander. All participants will receive a free Fontaine T-Shirt!

# OPPORTUNITIES AND ANNOUNCEMENTS

- [Fame! Fortune! Geography Awards](#)

It's awards season again in the Geography Department. We're now accepting applications for our departmental awards for undergraduates. There are seven awards available (listed below).

To nominate or be nominated, follow these links:

- To nominate yourself: <https://forms.gle/Jhe3HRMTXRC6fmdb8>
- To nominate someone else: <https://forms.gle/SWCYtZMhyJ5v7Kvr9> (They will be invited to confirm the nomination by completing the self-nomination form.)

### Third year awards

**Merle C. Prunty Memorial Undergraduate Scholarship (\$500):** This scholarship is awarded to the top third year in recognition of outstanding academic performance.  
**Department of Geography Atlas Award (\$100 + an atlas, 2 awardees):** Given to two top third year students in recognition of their academic excellence.

### Senior Awards

**NCGE/AAG Outstanding Senior Award (\$500):** For the most outstanding graduating fourth year student.  
**Globe Award for Academic Accomplishment (\$250 plus a small globe, 2 awardees):** For graduating fourth year students with strong records of academic achievement

### General awards

**Department of Geography Alumni Award (\$100, 3 awardees):** To students in recognition of departmental citizenship  
**DeVorse Travel Award (2 awards, \$250 each):** Supporting travel to an academic event or for research purposes. Named in honor of Louis DeVorse, a former member of the department.  
**ECO (Engagement and Community Outreach) Award (2 awards of \$300, voted on by GUSTO and AMS):** For demonstrated commitment to engaged research and/or community outreach.

## Social Media

Want to stay up to date with all things UGA Geography? Follow us on our social media accounts. If you have any events, news, awards, or other information you'd like to share on our social media, please reach out to Matt Calonius.



<https://www.facebook.com/GeographyDepartmentUGA/>



<https://www.instagram.com/geographyuga/>



<https://twitter.com/UgaGeography>



<https://geography.uga.edu>

GET YOUR **#FLUGA**  
FLU SHOT ON CAMPUS!  
NO OUT-OF-POCKET COST FOR STUDENTS!

#BeWellUGA

SCAN TO FIND  
DATES & LOCATIONS



University Health Center  
College of Pharmacy  
Well-Being Resources

Bring your UGA ID  
& Insurance Card!



## OPPORTUNITIES AND ANNOUNCEMENTS

- [Franklin College Events and Opportunities](#)

# JOIN US!

Cookies & Collaboration  
with Dean Anna Stenport 

**Tuesday, February 25, 2025**

**3:00–4:00 p.m.**

**Lobby  
Coverdell Center  
500 D.W. Brooks Drive**

*No RSVP needed*

For questions, contact Leslie Morrow at  
[lmorrow@uga.edu](mailto:lmorrow@uga.edu) or 706-542-3613

## General News and Announcements



*The Graticule Weekly is distributed each Friday Afternoon. If you have any news or events you'd like to share throughout the semester, please share them the Geography Department's Communication Coordinator well in advance. Past editions of The Graticule Weekly are available to view on our website!*



*With the Fall semester in full swing, our community remains busy as faculty, staff, students, and visitors navigate our campus. Prioritize your transportation safety and the safety of other's by checking out [the Watch For Dawgs official website](#).*



*Please download the new UGA Safe app from the Google Play or Apple App stores. Login using your UGA MyID or register as a guest to take advantage of a variety of safety features. For more information, please visit the [UGA Office of Emergency Preparedness website](#).*

Follow us on social media!



Franklin College of  
Arts and Sciences  
UNIVERSITY OF GEORGIA

# FRANKLIN FEST

Celebrating Franklin College  
All February!

Free Food | Giveaways  
Events | Fun

**2/3**

Chick-fil-A Biscuits  
President's Club Garden  
10:00 - 11:00 a.m.

**2/19**

Donuts and Coffee Bar  
Courtyard of Hugh  
Hodgson & Lamar Dodd  
10:00 - 11:00 a.m.

**2/11**

Snacks  
Tate Northwest Lawn  
3:00 - 4:00 p.m.

**2/27**

Chick-fil-A  
Sandwiches  
DW Brooks Mall  
12:15 - 1:15 p.m.

# OPPORTUNITIES AND ANNOUNCEMENTS

- [GUSTO'S Spring 2025 Calendar](#)

## GUSTO Spring 2025 Overview



### January

1/21: Coffee Hour  
1/28: Engagement Fair



### February

Week of 2/10: Coffee Hour  
Week of 2/24: Trivia Night with Prizes!



### March

Week of 3/10: Coffee Hour  
Week of 3/24:

Local Hike/  
Geocache



### April

Week of 4/7: Fall '25 Courses Showcase  
Week of 4/21: Coffee Hour

### May

Week of 5/5: Greenroof Potluck



## Social Media

Want to stay up to date with all things UGA Geography? Follow us on our social media accounts. If you have any events, news, awards, or other information you'd like to share on our social media, please reach out to Matt Calonius.



<https://www.facebook.com/GeographyDepartmentUGA/>



<https://www.instagram.com/geographyuga/>



[https://twitter.com/UGA\\_Geography](https://twitter.com/UGA_Geography)

# GET YOUR FLU SHOT ON CAMPUS!

## #FLUGA

NO OUT-OF-POCKET COST FOR STUDENTS!

#BeWellUGA

## SCAN TO FIND DATES & LOCATIONS



University Health Center  
College of Pharmacy  
Well-Being Resources

Bring your UGA ID  
& Insurance Card!



<https://geography.uga.edu>



# OPPORTUNITIES & ANNOUNCEMENTS

- [Human Geography Postdoc at Dartmouth](#)

The [Department of Geography](#) at Dartmouth College invites applications for a postdoctoral fellow in Human Geography. This two-year position will augment and complement existing departmental strengths, which include critical urban and health studies, Black geographies, feminist geographies, and nature-society relations.

This position is full-time, non-remote, in-residence at Dartmouth in Hanover, NH, with a start date as early as July 1, 2025. Advised and hosted in the Department of Geography, the postdoctoral researcher is expected to contribute intellectually to the department and Dartmouth, and to teach two 10-week long courses over two years. Postdoctoral fellows are also supported by the [Guarini School for Graduate and Advanced Studies](#), including their [diversity and inclusion initiatives](#).

[Dartmouth](#) is committed to academic excellence and encourages the open exchange of ideas within a culture of mutual respect. People with different backgrounds, life experiences, and perspectives make the Dartmouth community diverse, which enhances academic excellence. Applicants should address in their cover letter how their research, teaching, service, and/or life experiences prepare them to advance Dartmouth's commitment to diversity in service of academic excellence.

#### Qualifications

PhD, or ABD with degree received by the start date, in Geography or a closely related field.

#### Application Instructions

Please submit all materials electronically through Interfolio:

1. Letter of application of up to four (4) pages that includes research and teaching interests as well as preparation to advance Dartmouth's commitment to diversity in service of academic excellence;
2. Curriculum vitae, including names and contact information for three references;
3. One representative writing sample.

Review of applications will begin on March 3, 2025 and continue until the position is filled. Inquiries should be directed to Department Chair Xun Shi at [geography@dartmouth.edu](mailto:geography@dartmouth.edu).

- [NASA DEVELOP Research and Science Communication Positions](#)

NASA DEVELOP is currently recruiting for research and science communication positions for the Summer 2025 term, which are open to current students, recent graduates, and transitioning/early career professionals. The application window for Summer 2025 positions closes Friday, February 28th.

NASA DEVELOP is an applied science, capacity-building program in NASA's Earth Science Division. In collaboration with partner organizations, NASA DEVELOP conducts 10-week feasibility studies that address local, national, and international environmental and policy concerns using data collected by NASA's Earth-observing fleet of satellites. NASA DEVELOP operates at fourteen locations across the country at NASA Centers and other regional locations.

Details about this opportunity and how to apply can be found at <https://appliedsciences.nasa.gov/nasadevelop>. Applications for the Summer 2025 term (June 2nd - August 8th) are due Friday, February 28th, with recommendations due March 14th.

## Social Media

*Want to stay up to date with all things UGA Geography? Follow us on our social media accounts. If you have any events, news, awards, or other information you'd like to share on our social media, please reach out to Matt Colonius.*



<https://www.facebook.com/GeographyDepartmentUGA/>



<https://www.instagram.com/geographyuga/>



[https://twitter.com/UGA\\_Geography](https://twitter.com/UGA_Geography)



<https://geography.uga.edu>

# OPPORTUNITIES AND ANNOUNCEMENTS

## • Events Around Campus

### LACSI Research Talk

Tuesday  
February 25  
3:00 p.m.  
MLC 348



lacsi.uga.edu/events

## The Dollar How the U.S. Dollar Became a Popular Currency in Argentina

By **Dr. Ariel Wilkis**  
IDAES  
Universidad de San Martín  
Argentina



Co-sponsored by:



Latin American and  
Caribbean Studies Institute  
Franklin College of Arts and Sciences  
UNIVERSITY OF GEORGIA

Franklin College of  
Arts and Sciences  
Department of Insurance,  
Legal Studies and Real Estate

Office of Global Engagement  
Willson Center for  
Humanities & Arts



## EQUITABLE BREAKFAST

Event Focus: Disability,  
Youth, Education, &  
Advocacy

**A Meal:** Share breakfast with  
community members

**A Play:** Experience a thought-  
provoking short play

**A Conversation:** Engage in  
guided discussion led by  
facilitators with 10 people.

### SAVE THE DATE!

March 29, 2025 | 9am  
1150 Oglethorpe Ave,  
Athens, GA 30606.

Register  
here:

SCAN



## Prioritize Your Well Being:

### Crafty Coping Club

Crafty Coping Club      February 26th  
6:30 - 7:30pm  
UHC Health Center

Crafts, chats and learning new skills -  
Crafts provided or bring your own -  
Crafting also not required, just come  
chat!

### Change Stress Into Success

Change Stress      February 26th  
Into Success      1:00 - 1:50pm  
Online

Join us for this four-part rotating  
series on managing stress & anxiety.  
You will learn how to identify and  
manage your own stress and anxiety  
as it arises.

### UMatter

UMatter      March 13th  
6:00pm  
MLC 147

Step into our 60-90 minute interactive  
upstander intervention program,  
where college students will be given  
the knowledge and skills to take action  
when they see someone in need.  
Change the narrative and become an  
upstander. All participants will receive  
a free Fontaine T-Shirt!



# OPPORTUNITIES & ANNOUNCEMENTS

- [TUTOR, UNIVERSITY OF GEORGIA ATHLETIC ASSOCIATION ACADEMIC SUPPORT SERVICES](#)

## DESCRIPTION

Provide individual and small group tutoring to student-athletes in the Rankin Smith Student-Athlete Academic Center. Assist students in improving academic achievement by meeting with them weekly to clarify concepts, enhance study skills, and review class materials.

## COURSES NEEDED

GEOG 1111

\*additional courses in other subjects needed as well\*

## COMPENSATION/HOURS

\*Undergraduate students - \$13/hour

\*Graduate students/professionals - \$15/hour

\*\*Please note that individuals with an assistantship or any other on-campus employment cannot exceed 20 hours per week across all jobs\*\*

## POSITION TYPE

\*Part-time, not eligible for benefits

\*Tutoring will be conducted in-person

\*Hours of Operation:

Sunday – 5-9:30pm

Monday-Thursday – 8am-9:30pm

Friday – 8am-4:30pm

\*evening availability is not required, but always needed

## QUALIFICATIONS

\*Must be in at least second year of undergraduate study or a graduate student/professional

\*Must have earned a B or above in course(s) you are tutoring

\*Must have a minimum GPA of 3.0

## DESIRED CLASS LEVEL(S)

\*3rd Year, 4th Year, Graduate Student, Alumnus

## EXPERIENTIAL LEARNING CREDIT

\*Undergraduate student tutors may be eligible to receive Experiential Learning Credit

## APPLICATION PROCEDURES/ADDITIONAL INFORMATION

\*If you are interested, please reach out to [rankintutoring@uga.edu](mailto:rankintutoring@uga.edu).

## General News and Announcements



*The Graticule Weekly is distributed each Friday Afternoon. If you have any news or events you'd like to share throughout the semester, please share them the Geography Department's Communication Coordinator well in advance.*

*Past editions of The Graticule Weekly are available to view on our website!*



*With the Fall semester in full swing, our community remains busy as faculty, staff, students, and visitors navigate our campus. Prioritize your transportation safety and the safety of other's by checking out the Watch For Dawgs official website.*



*Please download the new UGA Safe app from the Google Play or Apple App stores. Login using your UGA MyID or register as a guest to take advantage of a variety of safety features. For more information, please visit the UGA Office of Emergency Preparedness website.*

Follow us on social media!





Center for Counseling  
& Personal Evaluation  
*Mary Frances Early College of Education*  
**UNIVERSITY OF GEORGIA**



# Latinx Student Support Group



**Thursdays  
starting  
February 13th  
6:00-7:30pm**



**SCAN THE QR CODE TO  
COMPLETE AN INTEREST FORM  
OR CALL 706-542-8508**





**The Fontaine Center**

*University Health Center*

*Student Affairs*

**UNIVERSITY OF GEORGIA**

# GRADUATE STUDENT GROUP WELLNESS COACHING

*Looking to connect with students working on dissertations, theses, academic projects, or research papers? Register for Graduate Student Group Wellness Coaching to stay motivated and improve strategies for time management and work/life balance.*

*Join us for 30-minute sessions to discuss academic goals and writing strategies or stay for an open 1.5 hour writing lab to work on your projects! Snacks provided!*

**FRIDAYS STARTING 1-24**  
**WILLIS WRITING CENTER**  
**PARK HALL 66**  
**11AM-1PM**

*\*Snacks will be provided!*







### GET HELP

Whether it's a life-threatening emergency, a non-emergency concern, or a crime tip; there are several options to relay those concerns.

### MOBILE BLUELIGHT

Immediately call the UGA Police and share your location in real-time with them.

### FRIEND WALK

Send your location in real-time to a friend so they can watch you as you walk to your destination.

### CHAT WITH UGA POLICE

Report a concern by texting with UGA Police.

### HOW TO RESPOND TO AN EMERGENCY

Conveniently located in one place to help you take immediate action.



**DOWNLOAD THE APP!**

[t.uga.edu/7Xf](https://t.uga.edu/7Xf)



# The Graticule Weekly

UGA Geography's Weekly Newsletter



## FACULTY SPOTLIGHT

### Andrew Herod Named Regents' Professor by University System of Georgia



UGA Geography professor Andrew Herod has been named a 2025 Regents' Professor by the University System of Georgia (USG). According to the USG, this honor is the "highest professorial recognition bestowed by the University System of Georgia Board of Regents." The award is given to faculty "in recognition of their innovative and pace-setting research."

Herod's career, research, and honors were recently highlighted in a [UGA Today article](#) written by Mike Wooten, Director of Communications for Academic Affairs:

Herod describes himself as a human geographer and political economist who's interested in how economic landscapes are made. He is widely considered the world's foremost expert in the field of labor geography, which he helped create in the 1990s.

"It is no exaggeration to say that Dr. Herod has been one of the most important voices of his generation in the broad interdisciplinary that is human geography," said Jamie Peck, Distinguished University Scholar and professor of geography at the University of British Columbia. "There are not many who can lay claim to the formation and shaping of an entirely new subfield in their home discipline."

Herod has published 12 books and more than 100 refereed journal articles, several of which have won national and international awards. ScholarGPS, a leading online research information and analysis platform, lists Herod among the top 0.5% of scholars cited worldwide.

"There's been virtually no published research essay on questions of geography, employment and economic restructuring published by an Anglophone geographer over the last 20-plus years that does not cite or draw substantively upon his research," said Noel Castree, a professor and associate dean for research at the University of Technology Sydney.

[Read the full UGA Today Article here](#)

&

[Learn more about Dr. Herod's Research and Scholarship](#)

## General News and Announcements



*The Graticule Weekly is distributed each Friday Afternoon. If you have any news or events you'd like to share throughout the semester, please share them the Geography Department's Communication Coordinator well in advance.*

*[Past editions of The Graticule Weekly are available to view on our website!](#)*



*With the Fall semester in full swing, our community remains busy as faculty, staff, students, and visitors navigate our campus. Prioritize your transportation safety and the safety of other's by checking out [the Watch For Dawgs official website](#).*



*Please download the new UGA Safe app from the Google Play or Apple App stores. Login using your UGA MyID or register as a guest to take advantage of a variety of safety features. For more information, please visit the [UGA Office of Emergency Preparedness website](#).*

Follow us on social media!



## UPCOMING DEFENSES



*Nemin Wu*  
*Oral Comp Exam*  
 March 19, 2025  
 11:30am, Location TBA



*Alex Music*  
*Thesis Defense*  
 April 4, 2025  
 9am, GGY 147



*Jielu Zhang*  
*Dissertation Defense*  
 April 4, 2025  
 12:00pm, GGY 147



*Xin Yan*  
*Comprehensive Exam*  
 April 18, 2025  
 10:00am, GGY 147

## MARK YOUR CALENDAR



February 28  
 GGY 200B  
 11am

This workshop will feature distinguished speakers who will share insights into cutting-edge advancements in remote sensing, geospatial technologies, and antenna systems.



April 23  
 Geography Bldg.  
 Room 200D

Our 2025 Geography Undergraduate Awards Reception will take place on Wednesday, April 23rd. Award nominations are open now! See the next page for info on nominating.



May 9  
 Location TBD  
 11:00 am

Our 2025 Geography Graduation Ceremony will take place on Friday, May 9th at 11am. More information about location, ticketing, & more coming soon.



## Prioritize Your Well Being:

### Crafty Coping Club

Crafty Coping Club      March 12  
 6:30 - 7:30pm  
 UHC Health Center

Crafts, chats and learning new skills -  
 Crafts provided or bring your own -  
 Crafting also not required, just come chat!

### Change Stress Into Success

Change Stress      March 12  
 Into Success      1:00 - 1:50pm  
 Online

Join us for this four-part rotating series on managing stress & anxiety. You will learn how to identify and manage your own stress and anxiety as it arises.

### UMatter

UMatter      March 13th  
 5:00pm  
 MLC 147

Step into our 60-90 minute interactive upstander intervention program, where college students will be given the knowledge and skills to take action when they see someone in need. Change the narrative and become an upstander. All participants will receive a free Fontaine T-Shirt!



# OPPORTUNITIES AND ANNOUNCEMENTS

- [Fame! Fortune! Geography Awards](#)

It's awards season again in the Geography Department. We're now accepting applications for our departmental awards for undergraduates. There are seven awards available (listed below).

To nominate or be nominated, follow these links:

- To nominate yourself: <https://forms.gle/Jhe3HRMTXRC6fmdb8>
- To nominate someone else: <https://forms.gle/SWCYtZMhyJ5v7Kvr9> (They will be invited to confirm the nomination by completing the self-nomination form.)

### Third year awards

**Merle C. Prunty Memorial Undergraduate Scholarship (\$500):** This scholarship is awarded to the top third year in recognition of outstanding academic performance.  
**Department of Geography Atlas Award (\$100 + an atlas, 2 awardees):** Given to two top third year students in recognition of their academic excellence.

### Senior Awards

**NCGE/AAG Outstanding Senior Award (\$500):** For the most outstanding graduating fourth year student.  
**Globe Award for Academic Accomplishment (\$250 plus a small globe, 2 awardees):** For graduating fourth year students with strong records of academic achievement

### General awards

**Department of Geography Alumni Award (\$100, 3 awardees):** To students in recognition of departmental citizenship  
**DeVorse Travel Award (2 awards, \$250 each):** Supporting travel to an academic event or for research purposes. Named in honor of Louis DeVorse, a former member of the department.  
**ECO (Engagement and Community Outreach) Award (2 awards of \$300, voted on by GUSTO and AMS):** For demonstrated commitment to engaged research and/or community outreach.

## Social Media

Want to stay up to date with all things UGA Geography? Follow us on our social media accounts. If you have any events, news, awards, or other information you'd like to share on our social media, please reach out to Matt Calonius.



<https://www.facebook.com/GeographyDepartmentUGA/>



<https://www.instagram.com/geographyuga/>



<https://twitter.com/UgaGeography>



<https://geography.uga.edu>

GET YOUR **#FLUGA**  
FLU SHOT ON CAMPUS!  
NO OUT-OF-POCKET COST FOR STUDENTS!

#BeWellUGA

SCAN TO FIND  
DATES & LOCATIONS



University Health Center  
College of Pharmacy  
Well-Being Resources

Bring your UGA ID  
& Insurance Card!

# OPPORTUNITIES AND ANNOUNCEMENTS

- [Graduate School Dates to Remember](#)

**Mar. 07, 2025**

Final date for doctoral students to submit information for Spring 2025 graduation. (Use the G120 form in [gradstatus.uga.edu](http://gradstatus.uga.edu).)

- [Doctoral Graduation Ceremony Information Form \(EdD, PhD, DMA, DrPH only!\)](#)

**Mar. 24, 2025**

Final date for electronically submitting one complete copy of a thesis or dissertation for a format check for Spring 2025 graduation. (Note: this is the “first format check” deadline.)

- **Format check** – Please be aware that this link will send you to ProQuest. All ETD submissions are handled through ProQuest.

Also remember to keep an eye on the Spring UGA [Academic Calendars](#) | [Office of the Registrar](#)



## EQUITABLE BREAKFAST

Event Focus: Disability, Youth, Education, & Advocacy

**A Meal:** Share breakfast with community members

**A Play:** Experience a thought-provoking short play

**A Conversation:** Engage in guided discussion led by facilitators with 10 people.

### SAVE THE DATE!

March 29, 2025 | 9am  
1150 Oglethorpe Ave,  
Athens, GA 30606.

Register here:

SCAN



## Prioritize Your Well Being:

### Crafty Coping Club

Crafty Coping Club      March 12  
6:30 - 7:30pm  
UHC Health Center

Crafts, chats and learning new skills -  
Crafts provided or bring your own -  
Crafting also not required, just come chat!

### Change Stress Into Success

Change Stress      March 12  
Into Success      1:00 - 1:50pm  
Online

Join us for this four-part rotating series on managing stress & anxiety. You will learn how to identify and manage your own stress and anxiety as it arises.

### UMatter

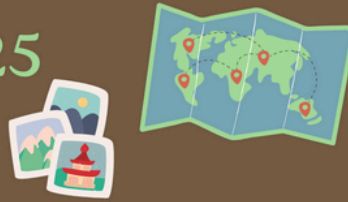
UMatter      March 13th  
6:00pm  
MLC 147

Step into our 60-90 minute interactive upstander intervention program, where college students will be given the knowledge and skills to take action when they see someone in need. Change the narrative and become an upstander. All participants will receive a free Fontaine T-Shirt!

# OPPORTUNITIES AND ANNOUNCEMENTS

- [GUSTO'S Spring 2025 Calendar](#)

## GUSTO Spring 2025 Overview



### January

1/21: Coffee Hour  
1/28: Engagement Fair



### February

Week of 2/10: Coffee Hour  
Week of 2/24: Trivia Night with Prizes!



### March

Week of 3/10: Coffee Hour  
Week of 3/24:

Local Hike/  
Geocache



### April

Week of 4/7: Fall '25 Courses Showcase  
Week of 4/21: Coffee Hour

### May

Week of 5/5: Greenroof Potluck



## Social Media

Want to stay up to date with all things UGA Geography? Follow us on our social media accounts. If you have any events, news, awards, or other information you'd like to share on our social media, please reach out to Matt Calonius.



<https://www.facebook.com/GeographyDepartmentUGA/>



<https://www.instagram.com/geographyuga/>



[https://twitter.com/UGA\\_Geography](https://twitter.com/UGA_Geography)

# GET YOUR FLU SHOT ON CAMPUS!

## #FLUGA

NO OUT-OF-POCKET COST FOR STUDENTS!

#BeWellUGA

## SCAN TO FIND DATES & LOCATIONS



University Health Center  
College of Pharmacy  
Well-Being Resources

Bring your UGA ID  
& Insurance Card!



<https://geography.uga.edu>



# OPPORTUNITIES & ANNOUNCEMENTS

- [Human Geography Postdoc at Dartmouth](#)

The [Department of Geography](#) at Dartmouth College invites applications for a postdoctoral fellow in Human Geography. This two-year position will augment and complement existing departmental strengths, which include critical urban and health studies, Black geographies, feminist geographies, and nature-society relations.

This position is full-time, non-remote, in-residence at Dartmouth in Hanover, NH, with a start date as early as July 1, 2025. Advised and hosted in the Department of Geography, the postdoctoral researcher is expected to contribute intellectually to the department and Dartmouth, and to teach two 10-week long courses over two years. Postdoctoral fellows are also supported by the [Guarini School for Graduate and Advanced Studies](#), including their [diversity and inclusion initiatives](#).

[Dartmouth](#) is committed to academic excellence and encourages the open exchange of ideas within a culture of mutual respect. People with different backgrounds, life experiences, and perspectives make the Dartmouth community diverse, which enhances academic excellence. Applicants should address in their cover letter how their research, teaching, service, and/or life experiences prepare them to advance Dartmouth's commitment to diversity in service of academic excellence.

#### Qualifications

PhD, or ABD with degree received by the start date, in Geography or a closely related field.

#### Application Instructions

Please submit all materials electronically through Interfolio:

1. Letter of application of up to four (4) pages that includes research and teaching interests as well as preparation to advance Dartmouth's commitment to diversity in service of academic excellence;
2. Curriculum vitae, including names and contact information for three references;
3. One representative writing sample.

Review of applications will begin on March 3, 2025 and continue until the position is filled. Inquiries should be directed to Department Chair Xun Shi at [geography@dartmouth.edu](mailto:geography@dartmouth.edu).

- [NASA DEVELOP Research and Science Communication Positions](#)

NASA DEVELOP is currently recruiting for research and science communication positions for the Summer 2025 term, which are open to current students, recent graduates, and transitioning/early career professionals. The application window for Summer 2025 positions closes Friday, February 28th.

NASA DEVELOP is an applied science, capacity-building program in NASA's Earth Science Division. In collaboration with partner organizations, NASA DEVELOP conducts 10-week feasibility studies that address local, national, and international environmental and policy concerns using data collected by NASA's Earth-observing fleet of satellites. NASA DEVELOP operates at fourteen locations across the country at NASA Centers and other regional locations.

Details about this opportunity and how to apply can be found at <https://appliedsciences.nasa.gov/nasadevelop>. Applications for the Summer 2025 term (June 2nd - August 8th) are due Friday, February 28th, with recommendations due March 14th.

## Social Media

*Want to stay up to date with all things UGA Geography? Follow us on our social media accounts. If you have any events, news, awards, or other information you'd like to share on our social media, please reach out to Matt Colonius.*



<https://www.facebook.com/GeographyDepartmentUGA/>



<https://www.instagram.com/geographyuga/>



[https://twitter.com/UGA\\_Geography](https://twitter.com/UGA_Geography)



<https://geography.uga.edu>

# OPPORTUNITIES & ANNOUNCEMENTS

- [TUTOR, UNIVERSITY OF GEORGIA ATHLETIC ASSOCIATION ACADEMIC SUPPORT SERVICES](#)

## DESCRIPTION

Provide individual and small group tutoring to student-athletes in the Rankin Smith Student-Athlete Academic Center. Assist students in improving academic achievement by meeting with them weekly to clarify concepts, enhance study skills, and review class materials.

## COURSES NEEDED

GEOG 1111

\*additional courses in other subjects needed as well\*

## COMPENSATION/HOURS

\*Undergraduate students - \$13/hour

\*Graduate students/professionals - \$15/hour

\*\*Please note that individuals with an assistantship or any other on-campus employment cannot exceed 20 hours per week across all jobs\*\*

## POSITION TYPE

\*Part-time, not eligible for benefits

\*Tutoring will be conducted in-person

\*Hours of Operation:

Sunday – 5-9:30pm

Monday-Thursday – 8am-9:30pm

Friday – 8am-4:30pm

\*evening availability is not required, but always needed

## QUALIFICATIONS

\*Must be in at least second year of undergraduate study or a graduate student/professional

\*Must have earned a B or above in course(s) you are tutoring

\*Must have a minimum GPA of 3.0

## DESIRED CLASS LEVEL(S)

\*3rd Year, 4th Year, Graduate Student, Alumnus

## EXPERIENTIAL LEARNING CREDIT

\*Undergraduate student tutors may be eligible to receive Experiential Learning Credit

## APPLICATION PROCEDURES/ADDITIONAL INFORMATION

\*If you are interested, please reach out to [rankintutoring@uga.edu](mailto:rankintutoring@uga.edu).

## General News and Announcements



*The Graticule Weekly is distributed each Friday Afternoon. If you have any news or events you'd like to share throughout the semester, please share them the Geography Department's Communication Coordinator well in advance.*

*Past editions of The Graticule Weekly are available to view on our website!*



*With the Fall semester in full swing, our community remains busy as faculty, staff, students, and visitors navigate our campus. Prioritize your transportation safety and the safety of other's by checking out the Watch For Dawgs official website.*



*Please download the new UGA Safe app from the Google Play or Apple App stores. Login using your UGA MyID or register as a guest to take advantage of a variety of safety features. For more information, please visit the UGA Office of Emergency Preparedness website.*

Follow us on social media!





Center for Counseling  
& Personal Evaluation  
*Mary Frances Early College of Education*  
**UNIVERSITY OF GEORGIA**



**Thursdays  
starting  
February 13th  
6:00-7:30pm**



**SCAN THE QR CODE TO  
COMPLETE AN INTEREST FORM  
OR CALL 706-542-8508**



# Latinx Student Support Group







**The Fontaine Center**

*University Health Center*

*Student Affairs*

**UNIVERSITY OF GEORGIA**

# GRADUATE STUDENT GROUP WELLNESS COACHING

*Looking to connect with students working on dissertations, theses, academic projects, or research papers? Register for Graduate Student Group Wellness Coaching to stay motivated and improve strategies for time management and work/life balance.*

*Join us for 30-minute sessions to discuss academic goals and writing strategies or stay for an open 1.5 hour writing lab to work on your projects! Snacks provided!*

**FRIDAYS STARTING 1-24**  
**WILLIS WRITING CENTER**  
**PARK HALL 66**  
**11AM-1PM**

*\*Snacks will be provided!*





### GET HELP

Whether it's a life-threatening emergency, a non-emergency concern, or a crime tip; there are several options to relay those concerns.

### MOBILE BLUELIGHT

Immediately call the UGA Police and share your location in real-time with them.

### FRIEND WALK

Send your location in real-time to a friend so they can watch you as you walk to your destination.

### CHAT WITH UGA POLICE

Report a concern by texting with UGA Police.

### HOW TO RESPOND TO AN EMERGENCY

Conveniently located in one place to help you take immediate action.



**DOWNLOAD THE APP!**

[t.uga.edu/7Xf](https://t.uga.edu/7Xf)

