

FRIDAY, JANUARY 17TH, 2025

The Graticule Weekly

UGA Geography's Weekly Newsletter



General News and Announcements



The Graticule Weekly is distributed each Friday Afternoon. If you have any news or events you'd like to share throughout the semester, please share them the Geography Department's Communication Coordinator well in advance.

Past editions of The Graticule Weekly are available to view on our website!

FACULTY AWARD SPOTLIGHT

David Porinchu Receives 2024 Sandy Beaver Excellence in Teaching Award



Geography Professor David Porinchu has been named a recipient of the Franklin College of Arts and Sciences Sandy Beaver for Excellence in Teaching Award. This annual honor is awarded to outstanding faculty members who show a sustained commitment to high-quality instruction, creativity in the development of new courses, external recognition for teaching accomplishments, and evidence of former students' accomplishments.

[Learn More About Dr. Porinchu's Research and Course Instruction](#)



With the Fall semester in full swing, our community remains busy as faculty, staff, students, and visitors navigate our campus. Prioritize your transportation safety and the safety of other's by checking out [the Watch For Dawgs official website.](#)

WELCOME BACK TO CAMPUS!

Welcome back to campus, everyone! It's been such a joyous experience to watch our UGA community spring to life with renewed ambition and excitement for the new semester. We hope that everyone's been settling into their new routines as the semester's add drop period comes to a close. We'd like to extend a particularly warm welcome back message to all our Geography & Atmospheric Sciences students, faculty, and staff. If, at any time, you need assistance throughout this semester or simply need a brief respite from the hustle and bustle of campus, the doors of the main Geography office are always open, and our wonderful office staff is always here to help. We're so excited to see what kind of wonderful things UGA Geographers and Atmospheric Scientists will do this semester. Have a great semester!



[View UGA's Directory of Resources and Student Support Services](#)



Please download the new UGA Safe app from the Google Play or Apple App stores. Login using your UGA MyID or register as a guest to take advantage of a variety of safety features. For more information, please visit the [UGA Office of Emergency Preparedness website.](#)

Follow us on social media!

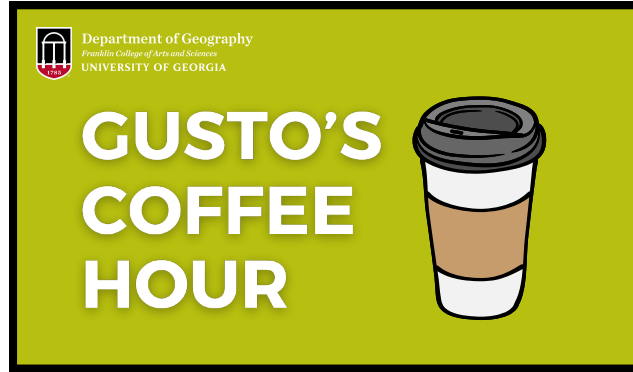


MARK YOUR CALENDAR



January 21
GGY 147
11:30 - 12:30

Mark your calendars! All are welcome at GUSTO's first Coffee Hour of the semester. Get to know your department over a fresh cup of joe! This is a great casual opportunity to make friends and network.



January 24
MLC 214
3:00 pm

Join LACSI for a lecture by Dr. Kent Eaton from the University of California Santa Cruz titled "What Can Latin America Tell Us About Subnational Democratic Erosion in the United States?" [Learn more here!](#)



January 31
GGY Room 200D
3:00 pm

Join Dr. Jenn Rice and Dr. Hilda Kurtz at this semester's town hall. This is a forum to connect around various concerns or issues you are facing in your classes or graduate assistantships, needs you have, AND for us to provide important updates and announcements to you



February 4th
Mahler Hall
2:00 pm

In celebration of 25 years of the Mary Frances Early Lecture Series, trail blazers and influential thought leaders [Dr. Valerie White](#) and [Dr. Tracey Ford](#) will be this year's speakers.



Prioritize Your Well Being:

Crafty Coping Club

Crafty Coping Club January 22nd
6:30 - 7:30pm
UHC Health Center

Crafts, chats and learning new skills -
Crafts provided or bring your own -
Crafting also not required, just come chat!

Sober Curious Social

Sober Curious January 23rd
Social 4:00 - 5:00pm
SLC Room 136

Thinking about starting Dry January or being alcohol-free for a month? Come meet other students. Free games!

UMatter

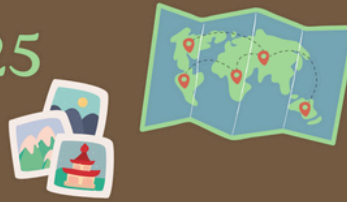
UMatter January 28th
5:00pm
MLC 147

Step into our 60-90 minute interactive upstander intervention program, where college students will be given the knowledge and skills to take action when they see someone in need. Change the narrative and become an upstander. All participants will receive a free Fontaine T-Shirt!

OPPORTUNITIES AND ANNOUNCEMENTS

- [GUSTO'S Spring 2025 Calendar](#)

GUSTO Spring 2025 Overview



January

1/21: Coffee Hour
1/28: Engagement Fair



February

Week of 2/10: Coffee Hour
Week of 2/24: Trivia Night with Prizes!



March

Week of 3/10: Coffee Hour
Week of 3/24:

Local Hike/
Geocache



April

Week of 4/7: Fall '25 Courses Showcase
Week of 4/21: Coffee Hour



May

Week of 5/5: Greenroof Potluck



GET YOUR FLU SHOT ON CAMPUS!

#FLUGA

NO OUT-OF-POCKET COST FOR STUDENTS!

#BeWellUGA

SCAN TO FIND DATES & LOCATIONS



University Health Center
College of Pharmacy
Well-Being Resources

Bring your UGA ID
& Insurance Card!

Social Media

Want to stay up to date with all things UGA Geography? Follow us on our social media accounts. If you have any events, news, awards, or other information you'd like to share on our social media, please reach out to Matt Calonius.



<https://www.facebook.com/GeographyDepartmentUGA/>



<https://www.instagram.com/geographyuga/>



<https://twitter.com/UgaGeography>



<https://geography.uga.edu>

OPPORTUNITIES AND ANNOUNCEMENTS

- Geography Office FWS Student Assistant Position Now Open

Earn extra \$
convenient
flexible
Apply!

FACULTY AWARD SPOTLIGHT



Student Assistant
in GEOG Office
FWS position
geography@uga.edu

Geography Department

Spring Semester 2025

9-12 hours weekly

\$12/hr.

The Geography/ATSC major student assistant's role will consist of both weekly responsibilities and some special projects throughout the semester.

Weekly responsibilities may include:

Staffing the front office to answer routine questions from visitors and callers. Sign for packages and notify recipients. Also, depending on the times they work, sort daily mail and put in mailboxes. Assist with simple requests such as logging in or searching for lost-and-found items, providing directions, or opening rooms for FMD technicians. Assist with periodic tasks such as changing out batteries in building clocks, moving light furniture around, or help with set-up for department events such as colloquia or the Geography graduation event.

Special projects may include:

Compile internship opportunities and resources from faculty and other sources. Assist office manager with scanning items for annual inventory audit. Organize files and boxes for Records Retention and Destruction, according to their procedures listed on website.

Other projects: we're open to hearing your ideas!

General News and Announcements



The Graticule Weekly is distributed each Friday Afternoon. If you have any news or events you'd like to share throughout the semester, please share them the Geography Department's Communication Coordinator well in advance.

Past editions of The Graticule Weekly are available to view on our website!



With the Fall semester in full swing, our community remains busy as faculty, staff, students, and visitors navigate our campus. Prioritize your transportation safety and the safety of other's by checking out the Watch For Dawgs official website.



Please download the new UGA Safe app from the Google Play or Apple App stores. Login using your UGA MyID or register as a guest to take advantage of a variety of safety features. For more information, please visit the UGA Office of Emergency Preparedness website.

Follow us on social media!



OPPORTUNITIES AND ANNOUNCEMENTS

- [UGA Geography Clinical Faculty Position Now Open](#)

Clinical Faculty in Community Geography and Outreach
Department of Geography
University of Georgia

The Department of Geography at the University of Georgia seeks a scholar with expertise in community engagement and experiential learning. This candidate will contribute to our growing community geography program by bringing a demonstrated ability to bridge the gap between scholarly research and locally relevant, community-centered needs. They will participate in the Georgia Community Geography Collective, a departmental initiative to develop mutually beneficial scholarly partnerships in and beyond the local community. The successful candidate will have a broad methodological skillset. Preferred qualifications include all or some of the following: expertise in participatory methods relevant to working with diverse communities; familiarity with geographic thought and scholarship that centers historically marginalized perspectives; the ability to use and provide instruction in geospatial technologies such as participatory GIS; and knowledge of and background working with qualitative research methods. The successful candidate is expected to teach effectively primarily at the undergraduate level and support instructional needs in community geography/service-learning, geospatial methods, and/or human geography. They will also be responsible for growing the department's internship program for undergraduate majors and assist in supervising undergraduate students doing research with community partners. As clinical faculty, this applicant will not have a formal research expectation.

This is an open rank position to be determined by level of experience. Applicants must have a Ph.D. degree in Geography or a related field from an accredited institution. This is a non-tenure-track position which starts on August 1, 2025, and is an academic year appointment (9 months) with opportunities to supplement salary during the summer. It is also subject to annual re-appointment. For UGA policies on rank, experience and promotion of clinical faculty, please see UGA Guidelines for Appointment and Promotion of Clinical Faculty.

Applications received by February 15, 2025, are assured full consideration; however, applications will be accepted until the position is filled. Applicants will be asked to provide names and contact information for three references using the online system. Supporting documents should include a statement addressing the candidate's training and experience relevant to community geography, with specific mention of how the candidate has demonstrated interest and ability to engage with diverse public partners through engaged scholarly work. In addition, applicants should provide a curriculum vitae and a statement of teaching philosophy that highlights their goals and interests.

[Learn More and Apply Here](#)

Prioritize Your Well Being:

Crafty Coping Club

Crafty Coping Club January 22nd
6:30 - 7:30pm
UHC Health Center

Crafts, chats and learning new skills -
Crafts provided or bring your own -
Crafting also not required, just come chat!

Sober Curious Social

Sober Curious January 23rd
Social 4:00 - 5:00pm
SLC Room 136

Thinking about starting Dry January or being alcohol-free for a month? Come meet other students. Free games!

UMatter

UMatter January 28th
5:00pm
MLC 147

Step into our 60-90 minute interactive upstander intervention program, where college students will be given the knowledge and skills to take action when they see someone in need. Change the narrative and become an upstander. All participants will receive a free Fontaine T-Shirt!

OPPORTUNITIES & ANNOUNCEMENTS

• [UGA Career Center Resources](#)

Check out one or more of UGA's [Career & Internship Fairs](#) this semester.

- [UGA Spring Career & Internship Fair 2025](#) | Wednesday, February 5, 12-5pm, Classic Center
 - If students are interested in summer internship roles or career opportunities, please feel free to promote this fair!
- [Include information about any college-specific career fairs.]
- [UGA Summer Job Fair](#) | Wednesday, March 19th, 11am-2:30pm, Tate Student Center Grand Hall (5th Floor)
 - This fair is a wonderful opportunity for students interested in part-time or seasonal jobs.

Arch Ready: We offer [40+ Arch Ready workshops](#) each semester as part of a professionalism certificate program to develop students' [career readiness competencies](#) and [institutional competencies](#). Students can earn the certificate by participating in 5 eligible events during the semester. Our final program this Spring takes place April 17 and certificates will be distributed the week of April 21!

Classroom Presentations: If you plan on being away this semester, consider allowing me to speak with your students on a relevant topic (resumes, interviewing skills, etc.) for part of or the full class time. Please note that I prefer a minimum of 2 weeks' notice. To request a presentation, please email me at erinwh@uga.edu or complete [this survey](#).

- Additionally, you can request up-to-date career content for your eLC course using these [eLC Career Development Modules \(request them here\)](#) or prompt your students to explore our [Online Resources](#), such as Forage (virtual work experience programs) or Big Interview (practice mock interviews).

UGA Mentor Program: As a faculty member, there are several ways you can interact with the [UGA Mentor Program](#), the University-wide resource connecting current students (undergraduate, graduate, and professional) with over 5,000 diverse, experienced alumni, faculty, and staff. This program has fostered over 8,000 relationships, each one helping our students grow personally and professionally.

Here are just a few ways faculty members can engage with this program:

- Serve as a [Mentor!](#)
- Encourage/require students to join the program and connect with a mentor
- Invite alumni mentors to speak in your classes or at events/programming
- Request the [UGA Mentor Program eLC modules](#) for your class (students can also [self-enroll!](#))

Refer Students: Feel free to send students our way for any career-related questions.

- Career Coaching Drop-In Hours:
 - In-Person: Mondays-Thursdays, 12pm-2pm in Clark Howell Hall (2nd Floor)
 - Virtual: Fridays, 11am-3pm, career.uga.edu/appointments
- Individual Appointments: Scheduled through [Handshake](#) or 706-542-3375

Professional Photo Booth: The UGA Career Center offers a free and user-friendly [professional photo booth](#) for all students and alumni. Students can simply drop by the Career Center front desk, Monday-Friday: 8:30am-4:30pm, to use it for their LinkedIn profile, website, portfolio, or conference presentations.

Social Media

Want to stay up to date with all things UGA Geography? Follow us on our social media accounts. If you have any events, news, awards, or other information you'd like to share on our social media, please reach out to Matt Colonius.



<https://www.facebook.com/GeographyDepartmentUGA/>



<https://www.instagram.com/geographyuga/>



<https://twitter.com/UgaGeography>



<https://geography.uga.edu>

OPPORTUNITIES & ANNOUNCEMENTS

- [TUTOR, UNIVERSITY OF GEORGIA ATHLETIC ASSOCIATION ACADEMIC SUPPORT SERVICES](#)

DESCRIPTION

Provide individual and small group tutoring to student-athletes in the Rankin Smith Student-Athlete Academic Center. Assist students in improving academic achievement by meeting with them weekly to clarify concepts, enhance study skills, and review class materials.

COURSES NEEDED

GEOG 1111

additional courses in other subjects needed as well

COMPENSATION/HOURS

*Undergraduate students - \$13/hour

*Graduate students/professionals - \$15/hour

Please note that individuals with an assistantship or any other on-campus employment cannot exceed 20 hours per week across all jobs

POSITION TYPE

*Part-time, not eligible for benefits

*Tutoring will be conducted in-person

*Hours of Operation:

Sunday – 5-9:30pm

Monday-Thursday – 8am-9:30pm

Friday – 8am-4:30pm

*evening availability is not required, but always needed

QUALIFICATIONS

*Must be in at least second year of undergraduate study or a graduate student/professional

*Must have earned a B or above in course(s) you are tutoring

*Must have a minimum GPA of 3.0

DESIRED CLASS LEVEL(S)

*3rd Year, 4th Year, Graduate Student, Alumnus

EXPERIENTIAL LEARNING CREDIT

*Undergraduate student tutors may be eligible to receive Experiential Learning Credit

APPLICATION PROCEDURES/ADDITIONAL INFORMATION

*If you are interested, please reach out to rankintutoring@uga.edu.

General News and Announcements



The Graticule Weekly is distributed each Friday Afternoon. If you have any news or events you'd like to share throughout the semester, please share them the Geography Department's Communication Coordinator well in advance. Past editions of The Graticule Weekly are available to view on our website!



With the Fall semester in full swing, our community remains busy as faculty, staff, students, and visitors navigate our campus. Prioritize your transportation safety and the safety of other's by checking out [the Watch For Dawgs official website.](#)



Please download the new UGA Safe app from the Google Play or Apple App stores. Login using your UGA MyID or register as a guest to take advantage of a variety of safety features. For more information, please visit the [UGA Office of Emergency Preparedness website.](#)

Follow us on social media!





The Fontaine Center

University Health Center

Student Affairs

UNIVERSITY OF GEORGIA

GRADUATE STUDENT GROUP WELLNESS COACHING

Looking to connect with students working on dissertations, theses, academic projects, or research papers? Register for Graduate Student Group Wellness Coaching to stay motivated and improve strategies for time management and work/life balance.

Join us for 30-minute sessions to discuss academic goals and writing strategies or stay for an open 1.5 hour writing lab to work on your projects! Snacks provided!

FRIDAYS STARTING 1-24
WILLIS WRITING CENTER
PARK HALL 66
11AM-1PM

**Snacks will be provided!*



LACSI
Research Talk

Friday, January 24
3:00 p.m.
MLC 214

What Can Latin America Tell Us About Subnational Democratic Erosion in the United States?

By Dr. Kent Eaton

University of California Santa Cruz

In recent years, an important literature has emerged on the phenomenon of subnational undemocratic regimes (SURs) in Latin America. Scholars have inquired into the origins of these regimes, their evolution over time, and their ability to persist within countries whose national political regimes have successfully democratized. Thinking across the Americas, what can this scholarship tell us about the subnational democratic erosion that is occurring unevenly across the United States? Based on a review of five key dimensions, this paper (co-authored with Agustina Giraudy) argues that the institutional landscape for the emergence and continuity of SURs is, comparatively speaking, more favorable in the U.S. than in any of Latin America's three federations (Argentina, Brazil, and Mexico).



DR. KENT EATON

is a Distinguished Professor of Politics in the Politics Department at the University of California Santa Cruz. His research examines the interplay between politics and territory, focusing on the territorial (re)organization of states in the world today. Prof. Eaton's current projects include the design and performance of federal institutions, the causes and consequences of decentralization, and the formation and evolution of movements for territorial autonomy. For more than 30 years he has conducted field research across Latin American countries, including Argentina, Bolivia, Brazil, Chile, Colombia, Ecuador, Peru, and Uruguay.



lacsi.uga.edu/events

Co-sponsored by:



**Latin American and
Caribbean Studies Institute**
Franklin College of Arts and Sciences
UNIVERSITY OF GEORGIA

**School of Public & International Affairs
International Affairs**

**Office of Research
Willson Center for
Humanities & Arts**



GET HELP

Whether it's a life-threatening emergency, a non-emergency concern, or a crime tip; there are several options to relay those concerns.

MOBILE BLUELIGHT

Immediately call the UGA Police and share your location in real-time with them.

FRIEND WALK

Send your location in real-time to a friend so they can watch you as you walk to your destination.

CHAT WITH UGA POLICE

Report a concern by texting with UGA Police.

HOW TO RESPOND TO AN EMERGENCY

Conveniently located in one place to help you take immediate action.



DOWNLOAD THE APP!

t.uga.edu/7Xf



The Graticule Weekly

UGA Geography's Weekly Newsletter



Student Group Spotlight

Get To Know GUSTO, the Geography Undergraduate Student Organization



GUSTO, UGA's Geography Undergraduate Student Organization is poised to have their most engaging semester yet, according to president, Jamie Jordan. GUSTO's Spring '25 calendar is full of exciting events including coffee hours, hikes, and trivia nights.

In addition to this, Jordan shares that GUSTO is in the process of organizing a host of new events to take place this Spring including a field trip, information sessions, graduate school & career outlook panels and several outdoor events.

Jordan shares that some of these events will be "opportunities for folks to engage critically with geography and take part in preserving civil rights history (more on that to come)." Regardless of where you are on your journey in Geography, now is an exciting time to get engaged with GUSTO. Here's how you can do that:

- [Find GUSTO at the Spring Engagement Fair - January 30th at the Tate Center](#)
- [Join GUSTO's GroupMe to join their conversation and community](#)
- [Follow GUSTO on Instagram to keep up with news, events, & opportunities](#)

Graduate Student Spring Milestones

Important Requirements for Completing Your Graduate Degree

Masters Students - For details about the main program requirements check the MA/MS Handbook. The most up to date version of the handbook is in the Geography website: [Geography MA/MS Handbook](#). To see if you are on the right track towards degree milestones, you can use the [Master's Degree Milestones & POS Checklist.pdf](#)

PHD Students - For details about the main program requirements check the PhD Handbook. The most up to date version of the handbook is in the Geography website: [Geography PhD Handbook](#). To see if you are on the right track towards degree milestones, you can use the [PhD Degree Milestones & POS Checklist.pdf](#)

All Students - To complete forms and access important links, visit the forms page in Geography website. Simply scroll down to your specific degree: [Graduate Student Forms | Geography Department at the University of Georgia](#). To keep up with important deadlines, check these: [Academic Calendars | Calendars | General Information | Office of the Registrar & Important Dates & Deadlines - UGA Graduate School](#). **For questions please contact fabiana.hayden@uga.edu.**

General News and Announcements



The Graticule Weekly is distributed each Friday Afternoon. If you have any news or events you'd like to share throughout the semester, please share them the Geography Department's Communication Coordinator well in advance. [Past editions of The Graticule Weekly are available to view on our website!](#)



With the Fall semester in full swing, our community remains busy as faculty, staff, students, and visitors navigate our campus. Prioritize your transportation safety and the safety of other's by checking out [the Watch For Dawgs official website](#).



Please download the new UGA Safe app from the Google Play or Apple App stores. Login using your UGA MyID or register as a guest to take advantage of a variety of safety features. For more information, please visit the [UGA Office of Emergency Preparedness website](#).

Follow us on social media!



MARK YOUR CALENDAR



January 31st
GGY Room 200D
3:00 pm



Join Dr. Jenn Rice and Dr. Hilda Kurtz at this semester's town hall. This is a forum to connect around various concerns or issues you are facing in your classes or graduate assistantships, needs you have, AND for us to provide important updates and announcements to you



February 4th
Mahler Hall
2:00 pm



In celebration of 25 years of the Mary Frances Early Lecture Series, trail blazers and influential thought leaders Dr. Valerie White and Dr. Tracey Ford will be this year's speakers.



February 7th
Baldwin Hall
3:00 - 4:30 pm



UGA Anthropology invites you to a lecture by guest speaker Kristin Phillips. Learn more about the event and about Dr. Phillips' research here!



February 13
GGY 321
6:00pm



Join UGA Geography's Community Mapping Lab for their first Mapathon of the semester. This is a great opportunity to develop your GIS skills - no prior experience required. Snacks will be provided!

Prioritize Your Well Being:

Crafty Coping Club

Crafty Coping Club January 29th
6:30 - 7:30pm
UHC Health Center

Crafts, chats and learning new skills -
Crafts provided or bring your own -
Crafting also not required, just come chat!

Change Stress Into Success

Change Stress January 29th
Into Success 1:00 - 1:50pm
Online

Join us for this four-part rotating series on managing stress & anxiety. You will learn how to identify and manage your own stress and anxiety as it arises.

UMatter

UMatter January 28th
5:00pm
MLC 147

Step into our 60-90 minute interactive upstander intervention program, where college students will be given the knowledge and skills to take action when they see someone in need. Change the narrative and become an upstander. All participants will receive a free Fontaine T-Shirt!

OPPORTUNITIES AND ANNOUNCEMENTS

- [GUSTO'S Spring 2025 Calendar](#)

GUSTO Spring 2025 Overview



January

1/21: Coffee Hour
1/28: Engagement Fair



February

Week of 2/10: Coffee Hour
Week of 2/24: Trivia Night with Prizes!



March

Week of 3/10: Coffee Hour
Week of 3/24:

Local Hike/
Geocache



April

Week of 4/7: Fall '25 Courses Showcase
Week of 4/21: Coffee Hour



May

Week of 5/5: Greenroof Potluck



GET YOUR FLU SHOT ON CAMPUS!

#FLUGA

NO OUT-OF-POCKET COST FOR STUDENTS!

#BeWellUGA

SCAN TO FIND DATES & LOCATIONS



University Health Center
College of Pharmacy
Well-Being Resources

Bring your UGA ID
& Insurance Card!

Social Media

Want to stay up to date with all things UGA Geography? Follow us on our social media accounts. If you have any events, news, awards, or other information you'd like to share on our social media, please reach out to Matt Calonius.



<https://www.facebook.com/GeographyDepartmentUGA/>



<https://www.instagram.com/geographyuga/>



<https://twitter.com/UgaGeography>



<https://geography.uga.edu>

OPPORTUNITIES AND ANNOUNCEMENTS

- Geography Office FWS Student Assistant Position Now Open

Earn extra \$
convenient
flexible
Apply!



Student Assistant
in GEOG Office
FWS position
geography@uga.edu

Geography Department

Spring Semester 2025

9-12 hours weekly

\$12/hr.

The Geography/ATSC major student assistant's role will consist of both weekly responsibilities and some special projects throughout the semester.

Weekly responsibilities may include:

Staffing the front office to answer routine questions from visitors and callers. Sign for packages and notify recipients. Also, depending on the times they work, sort daily mail and put in mailboxes. Assist with simple requests such as logging in or searching for lost-and-found items, providing directions, or opening rooms for FMD technicians. Assist with periodic tasks such as changing out batteries in building clocks, moving light furniture around, or help with set-up for department events such as colloquia or the Geography graduation event.

Special projects may include:

Compile internship opportunities and resources from faculty and other sources. Assist office manager with scanning items for annual inventory audit. Organize files and boxes for Records Retention and Destruction, according to their procedures listed on website.

Other projects: we're open to hearing your ideas!

General News and Announcements



The Graticule Weekly is distributed each Friday Afternoon. If you have any news or events you'd like to share throughout the semester, please share them the Geography Department's Communication Coordinator well in advance. Past editions of The Graticule Weekly are available to view on our website!



With the Fall semester in full swing, our community remains busy as faculty, staff, students, and visitors navigate our campus. Prioritize your transportation safety and the safety of other's by checking out [the Watch For Dawgs official website](#).



Please download the new UGA Safe app from the Google Play or Apple App stores. Login using your UGA MyID or register as a guest to take advantage of a variety of safety features. For more information, please visit the [UGA Office of Emergency Preparedness website](#).

Follow us on social media!



OPPORTUNITIES AND ANNOUNCEMENTS

- [UGA Geography Clinical Faculty Position Now Open](#)

Clinical Faculty in Community Geography and Outreach
Department of Geography
University of Georgia

The Department of Geography at the University of Georgia seeks a scholar with expertise in community engagement and experiential learning. This candidate will contribute to our growing community geography program by bringing a demonstrated ability to bridge the gap between scholarly research and locally relevant, community-centered needs. They will participate in the Georgia Community Geography Collective, a departmental initiative to develop mutually beneficial scholarly partnerships in and beyond the local community. The successful candidate will have a broad methodological skillset. Preferred qualifications include all or some of the following: expertise in participatory methods relevant to working with diverse communities; familiarity with geographic thought and scholarship that centers historically marginalized perspectives; the ability to use and provide instruction in geospatial technologies such as participatory GIS; and knowledge of and background working with qualitative research methods. The successful candidate is expected to teach effectively primarily at the undergraduate level and support instructional needs in community geography/service-learning, geospatial methods, and/or human geography. They will also be responsible for growing the department's internship program for undergraduate majors and assist in supervising undergraduate students doing research with community partners. As clinical faculty, this applicant will not have a formal research expectation.

This is an open rank position to be determined by level of experience. Applicants must have a Ph.D. degree in Geography or a related field from an accredited institution. This is a non-tenure-track position which starts on August 1, 2025, and is an academic year appointment (9 months) with opportunities to supplement salary during the summer. It is also subject to annual re-appointment. For UGA policies on rank, experience and promotion of clinical faculty, please see UGA Guidelines for Appointment and Promotion of Clinical Faculty.

Applications received by February 15, 2025, are assured full consideration; however, applications will be accepted until the position is filled. Applicants will be asked to provide names and contact information for three references using the online system. Supporting documents should include a statement addressing the candidate's training and experience relevant to community geography, with specific mention of how the candidate has demonstrated interest and ability to engage with diverse public partners through engaged scholarly work. In addition, applicants should provide a curriculum vitae and a statement of teaching philosophy that highlights their goals and interests.

[Learn More and Apply Here](#)

Prioritize Your Well Being:

Crafty Coping Club

Crafty Coping Club January 29th
6:30 - 7:30pm
UHC Health Center

Crafts, chats and learning new skills -
Crafts provided or bring your own -
Crafting also not required, just come chat!

Change Stress Into Success

Sober Curious January 29th
Social 1:00 - 1:50pm
Online

Join us for this four-part rotating series on managing stress & anxiety. You will learn how to identify and manage your own stress and anxiety as it arises.

UMatter

UMatter January 28th
5:00pm
MLC 147

Step into our 60-90 minute interactive upstander intervention program, where college students will be given the knowledge and skills to take action when they see someone in need. Change the narrative and become an upstander. All participants will receive a free Fontaine T-Shirt!

OPPORTUNITIES & ANNOUNCEMENTS

- [UGA Career Center Resources](#)

Check out one or more of UGA's [Career & Internship Fairs](#) this semester.

- [UGA Spring Career & Internship Fair 2025](#) | Wednesday, February 5, 12-5pm, Classic Center
 - If students are interested in summer internship roles or career opportunities, please feel free to promote this fair!
- [Include information about any college-specific career fairs.]
- [UGA Summer Job Fair](#) | Wednesday, March 19th, 11am-2:30pm, Tate Student Center Grand Hall (5th Floor)
 - This fair is a wonderful opportunity for students interested in part-time or seasonal jobs.

Arch Ready: We offer [40+ Arch Ready workshops](#) each semester as part of a professionalism certificate program to develop students' [career readiness competencies](#) and [institutional competencies](#). Students can earn the certificate by participating in 5 eligible events during the semester. Our final program this Spring takes place April 17 and certificates will be distributed the week of April 21!

Classroom Presentations: If you plan on being away this semester, consider allowing me to speak with your students on a relevant topic (resumes, interviewing skills, etc.) for part of or the full class time. Please note that I prefer a minimum of 2 weeks' notice. To request a presentation, please email me at erinwh@uga.edu or complete [this survey](#).

- Additionally, you can request up-to-date career content for your eLC course using these [eLC Career Development Modules \(request them here\)](#) or prompt your students to explore our [Online Resources](#), such as Forage (virtual work experience programs) or Big Interview (practice mock interviews).

UGA Mentor Program: As a faculty member, there are several ways you can interact with the [UGA Mentor Program](#), the University-wide resource connecting current students (undergraduate, graduate, and professional) with over 5,000 diverse, experienced alumni, faculty, and staff. This program has fostered over 8,000 relationships, each one helping our students grow personally and professionally.

Here are just a few ways faculty members can engage with this program:

- Serve as a [Mentor!](#)
- Encourage/require students to join the program and connect with a mentor
- Invite alumni mentors to speak in your classes or at events/programming
- Request the [UGA Mentor Program eLC modules](#) for your class (students can also [self-enroll!](#))

Refer Students: Feel free to send students our way for any career-related questions.

- Career Coaching Drop-In Hours:
 - In-Person: Mondays-Thursdays, 12pm-2pm in Clark Howell Hall (2nd Floor)
 - Virtual: Fridays, 11am-3pm, career.uga.edu/appointments
- Individual Appointments: Scheduled through [Handshake](#) or 706-542-3375

Professional Photo Booth: The UGA Career Center offers a free and user-friendly [professional photo booth](#) for all students and alumni. Students can simply drop by the Career Center front desk, Monday-Friday: 8:30am-4:30pm, to use it for their LinkedIn profile, website, portfolio, or conference presentations.

Social Media

Want to stay up to date with all things UGA Geography? Follow us on our social media accounts. If you have any events, news, awards, or other information you'd like to share on our social media, please reach out to Matt Colonius.



<https://www.facebook.com/GeographyDepartmentUGA/>



<https://www.instagram.com/geographyuga/>



<https://twitter.com/UGaGeography>



<https://geography.uga.edu>

OPPORTUNITIES & ANNOUNCEMENTS

- [TUTOR, UNIVERSITY OF GEORGIA ATHLETIC ASSOCIATION ACADEMIC SUPPORT SERVICES](#)

DESCRIPTION

Provide individual and small group tutoring to student-athletes in the Rankin Smith Student-Athlete Academic Center. Assist students in improving academic achievement by meeting with them weekly to clarify concepts, enhance study skills, and review class materials.

COURSES NEEDED

GEOG 1111

additional courses in other subjects needed as well

COMPENSATION/HOURS

*Undergraduate students - \$13/hour

*Graduate students/professionals - \$15/hour

Please note that individuals with an assistantship or any other on-campus employment cannot exceed 20 hours per week across all jobs

POSITION TYPE

*Part-time, not eligible for benefits

*Tutoring will be conducted in-person

*Hours of Operation:

Sunday – 5-9:30pm

Monday-Thursday – 8am-9:30pm

Friday – 8am-4:30pm

*evening availability is not required, but always needed

QUALIFICATIONS

*Must be in at least second year of undergraduate study or a graduate student/professional

*Must have earned a B or above in course(s) you are tutoring

*Must have a minimum GPA of 3.0

DESIRED CLASS LEVEL(S)

*3rd Year, 4th Year, Graduate Student, Alumnus

EXPERIENTIAL LEARNING CREDIT

*Undergraduate student tutors may be eligible to receive Experiential Learning Credit

APPLICATION PROCEDURES/ADDITIONAL INFORMATION

*If you are interested, please reach out to rankintutoring@uga.edu.

General News and Announcements



The Graticule Weekly is distributed each Friday Afternoon. If you have any news or events you'd like to share throughout the semester, please share them the Geography Department's Communication Coordinator well in advance. Past editions of The Graticule Weekly are available to view on our website!



With the Fall semester in full swing, our community remains busy as faculty, staff, students, and visitors navigate our campus. Prioritize your transportation safety and the safety of other's by checking out [the Watch For Dawgs official website.](#)



Please download the new UGA Safe app from the Google Play or Apple App stores. Login using your UGA MyID or register as a guest to take advantage of a variety of safety features. For more information, please visit the [UGA Office of Emergency Preparedness website.](#)

Follow us on social media!





The Fontaine Center

University Health Center

Student Affairs

UNIVERSITY OF GEORGIA

GRADUATE STUDENT GROUP WELLNESS COACHING

Looking to connect with students working on dissertations, theses, academic projects, or research papers? Register for Graduate Student Group Wellness Coaching to stay motivated and improve strategies for time management and work/life balance.

Join us for 30-minute sessions to discuss academic goals and writing strategies or stay for an open 1.5 hour writing lab to work on your projects! Snacks provided!

FRIDAYS STARTING 1-24
WILLIS WRITING CENTER
PARK HALL 66
11AM-1PM

**Snacks will be provided!*





GET HELP

Whether it's a life-threatening emergency, a non-emergency concern, or a crime tip; there are several options to relay those concerns.

MOBILE BLUELIGHT

Immediately call the UGA Police and share your location in real-time with them.

FRIEND WALK

Send your location in real-time to a friend so they can watch you as you walk to your destination.

CHAT WITH UGA POLICE

Report a concern by texting with UGA Police.

HOW TO RESPOND TO AN EMERGENCY

Conveniently located in one place to help you take immediate action.



DOWNLOAD THE APP!

t.uga.edu/7Xf



The Graticule Weekly

UGA Geography's Weekly Newsletter



Student Group Spotlight

UGA AMS Chapter Attends 150th American Meteorological Society Meeting



Earlier this month, students and faculty from UGA's chapter of the American Meteorological Society (AMS) attended the 105th AMS Annual Meeting in New Orleans, Louisiana. This year's meeting, held from January 17th - 22nd, was the world's largest gathering of weather and climate professionals and students with over 6000 participants in attendance.

This year's meeting featured discussions on renewable energy, extreme weather, environmental health, and was focused around the theme "Towards a Thriving Planet: Charting the Course Across Scales." UGA's chapter of AMS was represented by 14 undergraduate students, 3 graduate students, and 3 faculty, the following of whom presented at the meeting:

Undergraduate Students

Jacob Hamil (Poster) - "Madden-Julian Oscillation (MJO) Teleconnections and their Impact on Precipitation in South America"

Ethan Leclerc (Poster) - "Environmental Risk on Social Media: Communicating Heat Wave Risk with Numerical and Non-Numerical Messaging"

Emma Benedict (Poster) - "Assessing the Characteristics of Extreme Rainfall Events in Climate Models"

Lilly Cargile (Poster) - "Comparing a Weather App and On-Site Measurement for High School Sports Safety"

Shania Green (Poster) - "Using Probabilistic Rainfall Totals from the HRFF to Improve Flash Flood Messaging"

Jada Lamar (Talk) - "Understanding the Implications Comparing Categorical and Continuous Forecast Graphics"

Graduate Students

Kelly Neighbour (Poster) - "Assessment of Radar-Derived Tropical Cyclone Structure using Different Quality Control Methods"

Alex Music (Poster) - "Characterizing the Hazard of Rainfall-Diverse Hurricane Profiles in the Southeast United States"

General News and Announcements



The Graticule Weekly is distributed each Friday Afternoon. If you have any news or events you'd like to share throughout the semester, please share them the Geography Department's Communication Coordinator well in advance.

Past editions of The Graticule Weekly are available to view on our website!



With the Fall semester in full swing, our community remains busy as faculty, staff, students, and visitors navigate our campus. Prioritize your transportation safety and the safety of other's by checking out the Watch For Dawgs official website.



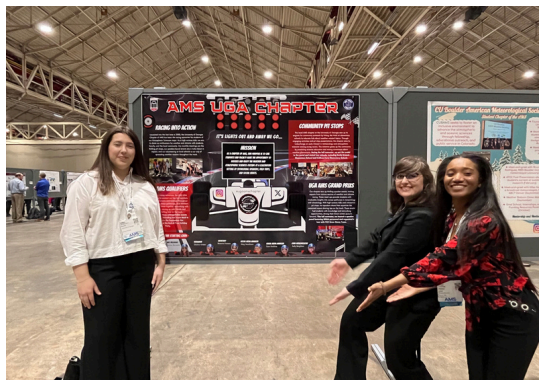
Please download the new UGA Safe app from the Google Play or Apple App stores. Login using your UGA MyID or register as a guest to take advantage of a variety of safety features. For more information, please visit the UGA Office of Emergency Preparedness website.

Follow us on social media!



STUDENT GROUP SPOTLIGHT (CONTINUED)

At the meeting, UGA's AMS student chapter won honorable mention in the chapter poster contest. Pictured to the right (left to right) are AMS Chapter officers Emma Benedict, Kelly Neighbour, and Jada Lamar.



Pictured are UGA AMS undergraduate chapter members (left to right) Jamie Giles, Jacob Peace, Justin Williams (standing in back), Morgan Hiers, Faiza Mohammed (standing), Emily Kirk, and Meg Needham.



Dr. Marshall Shepherd was a panelist on the Presidential Plenary Forum. In addition, two UGA Atmospheric Sciences Alumni, Dr. Marcus Williams and Dr. Brad Johnson co-organized a session on land use cover.



UPCOMING DEFENSES



Meghan Ray
Proposal Defense
February 5, 2025
9:00am, GGY 147



Nemin Wu
Proposal Defense
February 11, 2025
9:00am, GGY 321



Molly Azami
Oral Comp Exam
February 13, 2025
8:00am, GGY 147



Farnoosh Roozkhosh
Oral Comp Exam
February 13, 2025
12:00pm, GGY 147

Social Media

Want to stay up to date with all things UGA Geography? Follow us on our social media accounts. If you have any events, news, awards, or other information you'd like to share on our social media, please reach out to Matt Calonius.



<https://www.facebook.com/GeographyDepartmentUGA/>



<https://www.instagram.com/geographyuga/>



<https://twitter.com/UgaGeography>



<https://geography.uga.edu>

MARK YOUR CALENDAR



February 4th
Mahler Hall
2:00 pm

In celebration of 25 years of the Mary Frances Early Lecture Series, trail blazers and influential thought leaders Dr. Valerie White and Dr. Tracey Ford will be this year's speakers.



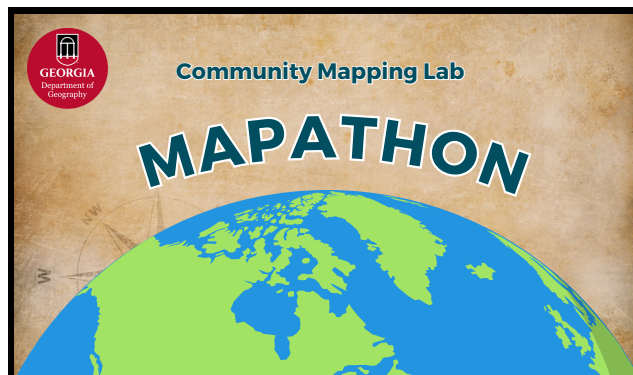
February 7th
Baldwin Hall
3:00 - 4:30 pm

UGA Anthropology invites you to a lecture by guest speaker Kristin Phillips. Learn more about the event and about Dr. Phillips' research here!



February 13
GGY 321
6:00pm

Join UGA Geography's Community Mapping Lab for their first Mapathon of the semester. This is a great opportunity to develop your GIS skills - no prior experience required. Snacks will be provided!



May 9
Location TBD
11:00 am

Our 2025 Geography Graduation Ceremony will take place on Friday, May 9th at 11am. More information about location, ticketing, & more coming soon.



Prioritize Your Well Being:

Crafty Coping Club

Crafty Coping Club February 5th
6:30 - 7:30pm
UHC Health Center

Crafts, chats and learning new skills -
Crafts provided or bring your own -
Crafting also not required, just come chat!

Change Stress Into Success

Change Stress February 5th
Into Success 1:00 - 1:50pm
Online

Join us for this four-part rotating series on managing stress & anxiety. You will learn how to identify and manage your own stress and anxiety as it arises.

UMatter

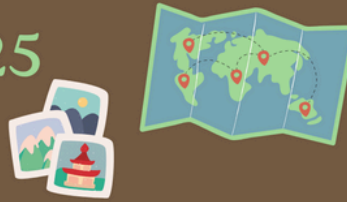
UMatter February 17th
5:00pm
MLC 147

Step into our 60-90 minute interactive upstander intervention program, where college students will be given the knowledge and skills to take action when they see someone in need. Change the narrative and become an upstander. All participants will receive a free Fontaine T-Shirt!

OPPORTUNITIES AND ANNOUNCEMENTS

- [GUSTO'S Spring 2025 Calendar](#)

GUSTO Spring 2025 Overview



January

1/21: Coffee Hour
1/28: Engagement Fair



February

Week of 2/10:
Coffee Hour
Week of 2/24:
Trivia Night with Prizes!



March

Week of 3/10:
Coffee Hour
Week of 3/24:

Local Hike/
Geocache



April

Week of 4/7:
Fall '25 Courses Showcase
Week of 4/21:
Coffee Hour



May

Week of 5/5:
Greenroof Potluck



GET YOUR FLU SHOT ON CAMPUS!

#FLUGA

NO OUT-OF-POCKET COST FOR STUDENTS!

#BeWellUGA

SCAN TO FIND DATES & LOCATIONS



University Health Center
College of Pharmacy
Well-Being Resources

Bring your UGA ID
& Insurance Card!

Social Media

Want to stay up to date with all things UGA Geography? Follow us on our social media accounts. If you have any events, news, awards, or other information you'd like to share on our social media, please reach out to Matt Calonius.



<https://www.facebook.com/GeographyDepartmentUGA/>



<https://www.instagram.com/geographyuga/>



<https://twitter.com/UgaGeography>



<https://geography.uga.edu>

OPPORTUNITIES AND ANNOUNCEMENTS

- Geography Office FWS Student Assistant Position Now Open



**Earn extra \$
convenient
flexible
Apply!**



Student Assistant
in GEOG Office
FWS position
geography@uga.edu

Geography Department

Spring Semester 2025

9-12 hours weekly

\$12/hr.

The Geography/ATSC major student assistant's role will consist of both weekly responsibilities and some special projects throughout the semester.

Weekly responsibilities may include:

Staffing the front office to answer routine questions from visitors and callers. Sign for packages and notify recipients. Also, depending on the times they work, sort daily mail and put in mailboxes. Assist with simple requests such as logging in or searching for lost-and-found items, providing directions, or opening rooms for FMD technicians. Assist with periodic tasks such as changing out batteries in building clocks, moving light furniture around, or help with set-up for department events such as colloquia or the Geography graduation event.

Special projects may include:

Compile internship opportunities and resources from faculty and other sources. Assist office manager with scanning items for annual inventory audit. Organize files and boxes for Records Retention and Destruction, according to their procedures listed on website.

Other projects: we're open to hearing your ideas!

General News and Announcements



The Graticule Weekly is distributed each Friday Afternoon. If you have any news or events you'd like to share throughout the semester, please share them the Geography Department's Communication Coordinator well in advance.

Past editions of The Graticule Weekly are available to view on our website!



With the Fall semester in full swing, our community remains busy as faculty, staff, students, and visitors navigate our campus. Prioritize your transportation safety and the safety of other's by checking out the Watch For Dawgs official website.



Please download the new UGA Safe app from the Google Play or Apple App stores. Login using your UGA MyID or register as a guest to take advantage of a variety of safety features. For more information, please visit the UGA Office of Emergency Preparedness website.

Follow us on social media!



OPPORTUNITIES AND ANNOUNCEMENTS

- [UGA Geography Clinical Faculty Position Now Open](#)

Clinical Faculty in Community Geography and Outreach
Department of Geography
University of Georgia

The Department of Geography at the University of Georgia seeks a scholar with expertise in community engagement and experiential learning. This candidate will contribute to our growing community geography program by bringing a demonstrated ability to bridge the gap between scholarly research and locally relevant, community-centered needs. They will participate in the Georgia Community Geography Collective, a departmental initiative to develop mutually beneficial scholarly partnerships in and beyond the local community. The successful candidate will have a broad methodological skillset. Preferred qualifications include all or some of the following: expertise in participatory methods relevant to working with diverse communities; familiarity with geographic thought and scholarship that centers historically marginalized perspectives; the ability to use and provide instruction in geospatial technologies such as participatory GIS; and knowledge of and background working with qualitative research methods. The successful candidate is expected to teach effectively primarily at the undergraduate level and support instructional needs in community geography/service-learning, geospatial methods, and/or human geography. They will also be responsible for growing the department's internship program for undergraduate majors and assist in supervising undergraduate students doing research with community partners. As clinical faculty, this applicant will not have a formal research expectation.

This is an open rank position to be determined by level of experience. Applicants must have a Ph.D. degree in Geography or a related field from an accredited institution. This is a non-tenure-track position which starts on August 1, 2025, and is an academic year appointment (9 months) with opportunities to supplement salary during the summer. It is also subject to annual re-appointment. For UGA policies on rank, experience and promotion of clinical faculty, please see UGA Guidelines for Appointment and Promotion of Clinical Faculty.

Applications received by February 15, 2025, are assured full consideration; however, applications will be accepted until the position is filled. Applicants will be asked to provide names and contact information for three references using the online system. Supporting documents should include a statement addressing the candidate's training and experience relevant to community geography, with specific mention of how the candidate has demonstrated interest and ability to engage with diverse public partners through engaged scholarly work. In addition, applicants should provide a curriculum vitae and a statement of teaching philosophy that highlights their goals and interests.

[Learn More and Apply Here](#)

Prioritize Your Well Being:

Crafty Coping Club

Crafty Coping Club February 5th
6:30 - 7:30pm
UHC Health Center

Crafts, chats and learning new skills -
Crafts provided or bring your own -
Crafting also not required, just come chat!

Change Stress Into Success

Change Stress February 5th
Into Success 1:00 - 1:50pm
Online

Join us for this four-part rotating series on managing stress & anxiety. You will learn how to identify and manage your own stress and anxiety as it arises.

UMatter

UMatter February 17th
5:00pm
MLC 147

Step into our 60-90 minute interactive upstander intervention program, where college students will be given the knowledge and skills to take action when they see someone in need. Change the narrative and become an upstander. All participants will receive a free Fontaine T-Shirt!

OPPORTUNITIES & ANNOUNCEMENTS

• [UGA Career Center Resources](#)

Check out one or more of UGA's [Career & Internship Fairs](#) this semester.

- [UGA Spring Career & Internship Fair 2025](#) | Wednesday, February 5, 12-5pm, Classic Center
 - If students are interested in summer internship roles or career opportunities, please feel free to promote this fair!
- [Include information about any college-specific career fairs.]
- [UGA Summer Job Fair](#) | Wednesday, March 19th, 11am-2:30pm, Tate Student Center Grand Hall (5th Floor)
 - This fair is a wonderful opportunity for students interested in part-time or seasonal jobs.

Arch Ready: We offer [40+ Arch Ready workshops](#) each semester as part of a professionalism certificate program to develop students' [career readiness competencies](#) and [institutional competencies](#). Students can earn the certificate by participating in 5 eligible events during the semester. Our final program this Spring takes place April 17 and certificates will be distributed the week of April 21!

Classroom Presentations: If you plan on being away this semester, consider allowing me to speak with your students on a relevant topic (resumes, interviewing skills, etc.) for part of or the full class time. Please note that I prefer a minimum of 2 weeks' notice. To request a presentation, please email me at erinwh@uga.edu or complete [this survey](#).

- Additionally, you can request up-to-date career content for your eLC course using these [eLC Career Development Modules \(request them here\)](#) or prompt your students to explore our [Online Resources](#), such as Forage (virtual work experience programs) or Big Interview (practice mock interviews).

UGA Mentor Program: As a faculty member, there are several ways you can interact with the [UGA Mentor Program](#), the University-wide resource connecting current students (undergraduate, graduate, and professional) with over 5,000 diverse, experienced alumni, faculty, and staff. This program has fostered over 8,000 relationships, each one helping our students grow personally and professionally.

Here are just a few ways faculty members can engage with this program:

- Serve as a [Mentor!](#)
- Encourage/require students to join the program and connect with a mentor
- Invite alumni mentors to speak in your classes or at events/programming
- Request the [UGA Mentor Program eLC modules](#) for your class (students can also [self-enroll!](#))

Refer Students: Feel free to send students our way for any career-related questions.

- Career Coaching Drop-In Hours:
 - In-Person: Mondays-Thursdays, 12pm-2pm in Clark Howell Hall (2nd Floor)
 - Virtual: Fridays, 11am-3pm, career.uga.edu/appointments
- Individual Appointments: Scheduled through [Handshake](#) or 706-542-3375

Professional Photo Booth: The UGA Career Center offers a free and user-friendly [professional photo booth](#) for all students and alumni. Students can simply drop by the Career Center front desk, Monday-Friday: 8:30am-4:30pm, to use it for their LinkedIn profile, website, portfolio, or conference presentations.

Social Media

Want to stay up to date with all things UGA Geography? Follow us on our social media accounts. If you have any events, news, awards, or other information you'd like to share on our social media, please reach out to Matt Colonius.



<https://www.facebook.com/GeographyDepartmentUGA/>



<https://www.instagram.com/geographyuga/>



<https://twitter.com/UGaGeography>



<https://geography.uga.edu>

OPPORTUNITIES & ANNOUNCEMENTS

- [TUTOR, UNIVERSITY OF GEORGIA ATHLETIC ASSOCIATION ACADEMIC SUPPORT SERVICES](#)

DESCRIPTION

Provide individual and small group tutoring to student-athletes in the Rankin Smith Student-Athlete Academic Center. Assist students in improving academic achievement by meeting with them weekly to clarify concepts, enhance study skills, and review class materials.

COURSES NEEDED

GEOG 1111

additional courses in other subjects needed as well

COMPENSATION/HOURS

*Undergraduate students - \$13/hour

*Graduate students/professionals - \$15/hour

Please note that individuals with an assistantship or any other on-campus employment cannot exceed 20 hours per week across all jobs

POSITION TYPE

*Part-time, not eligible for benefits

*Tutoring will be conducted in-person

*Hours of Operation:

Sunday – 5-9:30pm

Monday-Thursday – 8am-9:30pm

Friday – 8am-4:30pm

*evening availability is not required, but always needed

QUALIFICATIONS

*Must be in at least second year of undergraduate study or a graduate student/professional

*Must have earned a B or above in course(s) you are tutoring

*Must have a minimum GPA of 3.0

DESIRED CLASS LEVEL(S)

*3rd Year, 4th Year, Graduate Student, Alumnus

EXPERIENTIAL LEARNING CREDIT

*Undergraduate student tutors may be eligible to receive Experiential Learning Credit

APPLICATION PROCEDURES/ADDITIONAL INFORMATION

*If you are interested, please reach out to rankintutoring@uga.edu.

General News and Announcements



The Graticule Weekly is distributed each Friday Afternoon. If you have any news or events you'd like to share throughout the semester, please share them the Geography Department's Communication Coordinator well in advance. Past editions of The Graticule Weekly are available to view on our website!



With the Fall semester in full swing, our community remains busy as faculty, staff, students, and visitors navigate our campus. Prioritize your transportation safety and the safety of other's by checking out [the Watch For Dawgs official website.](#)



Please download the new UGA Safe app from the Google Play or Apple App stores. Login using your UGA MyID or register as a guest to take advantage of a variety of safety features. For more information, please visit the [UGA Office of Emergency Preparedness website.](#)

Follow us on social media!





Center for Counseling
& Personal Evaluation
Mary Frances Early College of Education
UNIVERSITY OF GEORGIA



**Thursdays
starting
February 13th
6:00-7:30pm**



**SCAN THE QR CODE TO
COMPLETE AN INTEREST FORM
OR CALL 706-542-8508**



Latinx Student Support Group





The Fontaine Center

University Health Center

Student Affairs

UNIVERSITY OF GEORGIA

GRADUATE STUDENT GROUP WELLNESS COACHING

Looking to connect with students working on dissertations, theses, academic projects, or research papers? Register for Graduate Student Group Wellness Coaching to stay motivated and improve strategies for time management and work/life balance.

Join us for 30-minute sessions to discuss academic goals and writing strategies or stay for an open 1.5 hour writing lab to work on your projects! Snacks provided!

FRIDAYS STARTING 1-24
WILLIS WRITING CENTER
PARK HALL 66
11AM-1PM

**Snacks will be provided!*





GET HELP

Whether it's a life-threatening emergency, a non-emergency concern, or a crime tip; there are several options to relay those concerns.

MOBILE BLUELIGHT

Immediately call the UGA Police and share your location in real-time with them.

FRIEND WALK

Send your location in real-time to a friend so they can watch you as you walk to your destination.

CHAT WITH UGA POLICE

Report a concern by texting with UGA Police.

HOW TO RESPOND TO AN EMERGENCY

Conveniently located in one place to help you take immediate action.



DOWNLOAD THE APP!

t.uga.edu/7Xf

